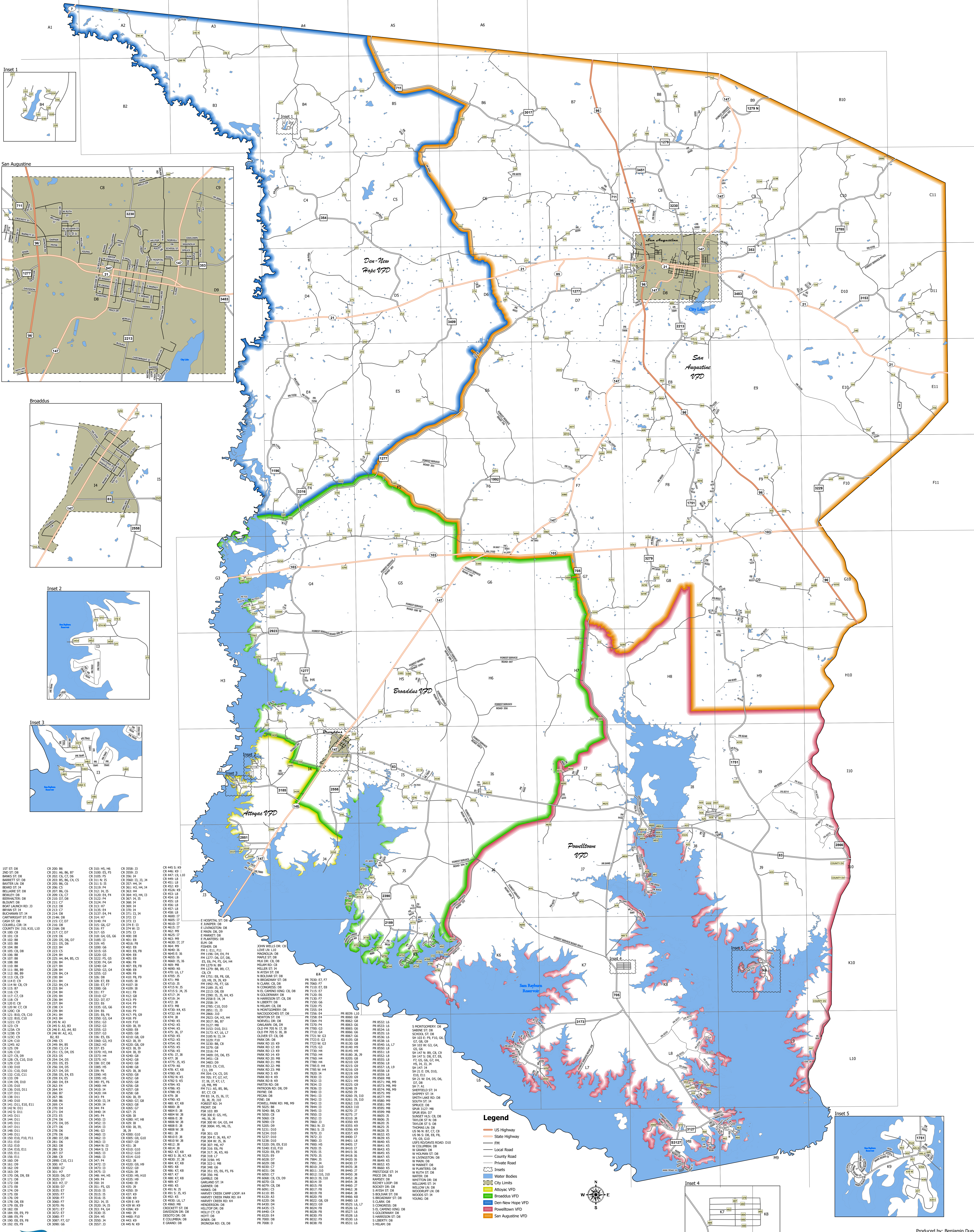


SAN AUGUSTINE COUNTY

VFD SERVICE AREAS



1ST ST DB	CR 200: B6	CR 310: H5, H6	CR 355: S3	CR 445: S9
BANKS ST DB	CR 201: A6, B6, B7	CR 310: H5, H6	CR 355: S3	CR 445: S9
BARKER LN DB	CR 202: C6, C7, D6	CR 310: H5, H6	CR 355: S3	CR 445: S9
BEARD ST DB	CR 203: B6, C6, C7	CR 310: H5, H6	CR 355: S3	CR 445: S9
BELMONT ST DB	CR 204: B6	CR 310: H5, H6	CR 355: S3	CR 445: S9
BELWATER DB	CR 205: B6, C6	CR 310: H5, H6	CR 355: S3	CR 445: S9
BENHARTER DB	CR 206: B6, C6	CR 310: H5, H6	CR 355: S3	CR 445: S9
BERRY ST DB	CR 207: B6, C6	CR 310: H5, H6	CR 355: S3	CR 445: S9
BLANK ST DB	CR 208: B6, C6	CR 310: H5, H6	CR 355: S3	CR 445: S9
BOAT LAUNCH RD: J3	CR 209: B6, C6	CR 310: H5, H6	CR 355: S3	CR 445: S9
BOWMAN ST: B4	CR 210: D7, D8	CR 310: H5, H6	CR 355: S3	CR 445: S9
BUCHANAN ST: J4	CR 211: A6, B6, B7	CR 310: H5, H6	CR 355: S3	CR 445: S9
CASH ST: DB	CR 212: D8	CR 310: H5, H6	CR 355: S3	CR 445: S9
COLUMBIA CR: B4	CR 213: A6	CR 310: H5, H6	CR 355: S3	CR 445: S9
COUNTY OV 310, K10, L10	CR 214: D8	CR 310: H5, H6	CR 355: S3	CR 445: S9
CR 100: C8	CR 215: C7, D7	CR 310: H5, H6	CR 355: S3	CR 445: S9
CR 101: C8	CR 216: D8	CR 310: H5, H6	CR 355: S3	CR 445: S9
CR 102: B8	CR 217: C7, D7	CR 310: H5, H6	CR 355: S3	CR 445: S9
CR 103: B8	CR 218: D8	CR 310: H5, H6	CR 355: S3	CR 445: S9
CR 104: B8	CR 219: D8	CR 310: H5, H6	CR 355: S3	CR 445: S9
CR 105: C8, D8	CR 220: D8, D9, D7	CR 310: H5, H6	CR 355: S3	CR 445: S9
CR 106: B8	CR 221: D8, D9	CR 310: H5, H6	CR 355: S3	CR 445: S9
CR 107: B8	CR 222: D8	CR 310: H5, H6	CR 355: S3	CR 445: S9
CR 108: B8	CR 223: C8	CR 310: H5, H6	CR 355: S3	CR 445: S9
CR 109: B8	CR 224: B8	CR 310: H5, H6	CR 355: S3	CR 445: S9
CR 110: B8	CR 225: A4, B4, B5, C5	CR 310: H5, H6	CR 355: S3	CR 445: S9
CR 111: B8, B9	CR 226: B8	CR 310: H5, H6	CR 355: S3	CR 445: S9
CR 112: B8, C4	CR 227: B8	CR 310: H5, H6	CR 355: S3	CR 445: S9
CR 113: C8, C9	CR 228: B8	CR 310: H5, H6	CR 355: S3	CR 445: S9
CR 114: W, C8, C9	CR 229: B8	CR 310: H5, H6	CR 355: S3	CR 445: S9
CR 115: C8	CR 230: B8	CR 310: H5, H6	CR 355: S3	CR 445: S9
CR 116: C9	CR 231: B8	CR 310: H5, H6	CR 355: S3	CR 445: S9
CR 117: C8, C9	CR 232: B8	CR 310: H5, H6	CR 355: S3	CR 445: S9
CR 118: C9	CR 233: B8	CR 310: H5, H6	CR 355: S3	CR 445: S9
CR 119: C9	CR 234: B8	CR 310: H5, H6	CR 355: S3	CR 445: S9
CR 120: W, C8, C9	CR 235: B8	CR 310: H5, H6	CR 355: S3	CR 445: S9
CR 121: B10, C8, C10	CR 236: B8	CR 310: H5, H6	CR 355: S3	CR 445: S9
CR 122: C10	CR 237: B8	CR 310: H5, H6	CR 355: S3	CR 445: S9
CR 123: C10	CR 238: B8	CR 310: H5, H6	CR 355: S3	CR 445: S9
CR 124: C8	CR 239: B8	CR 310: H5, H6	CR 355: S3	CR 445: S9
CR 125: C8	CR 240: B8	CR 310: H5, H6	CR 355: S3	CR 445: S9
CR 126: C8	CR 241: B8	CR 310: H5, H6	CR 355: S3	CR 445: S9
CR 127: C8	CR 242: B8	CR 310: H5, H6	CR 355: S3	CR 445: S9
CR 128: C8, D10, D10	CR 243: B8	CR 310: H5, H6	CR 355: S3	CR 445: S9
CR 129: C8	CR 244: B8	CR 310: H5, H6	CR 355: S3	CR 445: S9
CR 130: D10	CR 245: B8	CR 310: H5, H6	CR 355: S3	CR 445: S9
CR 131: C10, D10	CR 246: B8	CR 310: H5, H6	CR 355: S3	CR 445: S9
CR 132: C10, D10	CR 247: B8	CR 310: H5, H6	CR 355: S3	CR 445: S9
CR 133: C10	CR 248: B8	CR 310: H5, H6	CR 355: S3	CR 445: S9
CR 134: D9, D10	CR 249: B8	CR 310: H5, H6	CR 355: S3	CR 445: S9
CR 135: D10	CR 250: B8	CR 310: H5, H6	CR 355: S3	CR 445: S9
CR 136: D10	CR 251: B8	CR 310: H5, H6	CR 355: S3	CR 445: S9
CR 137: D10	CR 252: B8	CR 310: H5, H6	CR 355: S3	CR 445: S9
CR 138: D10	CR 253: B8	CR 310: H5, H6	CR 355: S3	CR 445: S9
CR 139: D10	CR 254: B8	CR 310: H5, H6	CR 355: S3	CR 445: S9
CR 140: D10	CR 255: B8	CR 310: H5, H6	CR 355: S3	CR 445: S9
CR 141: D10, E10, E11	CR 256: B8	CR 310: H5, H6	CR 355: S3	CR 445: S9
CR 142: D10	CR 257: B8	CR 310: H5, H6	CR 355: S3	CR 445: S9
CR 143: D10	CR 258: B8	CR 310: H5, H6	CR 355: S3	CR 445: S9
CR 144: D10	CR 259: B8	CR 310: H5, H6	CR 355: S3	CR 445: S9
CR 145: D10	CR 260: B8	CR 310: H5, H6	CR 355: S3	CR 445: S9
CR 146: D10	CR 261: B8	CR 310: H5, H6	CR 355: S3	CR 445: S9
CR 147: D10	CR 262: B8	CR 310: H5, H6	CR 355: S3	CR 445: S9
CR 148: D10	CR 263: B8	CR 310: H5, H6	CR 355: S3	CR 445: S9
CR 149: D10	CR 264: B8	CR 310: H5, H6	CR 355: S3	CR 445: S9
CR 150: D10	CR 265: B8	CR 310: H5, H6	CR 355: S3	CR 445: S9
CR 151: D10	CR 266: B8	CR 310: H5, H6	CR 355: S3	CR 445: S9
CR 152: D10	CR 267: B8	CR 310: H5, H6	CR 355: S3	CR 445: S9
CR 153: D10	CR 268: B8	CR 310: H5, H6	CR 355: S3	CR 445: S9
CR 154: D10	CR 269: B8	CR 310: H5, H6	CR 355: S3	CR 445: S9
CR 155: D10	CR 270: B8	CR 310: H5, H6	CR 355: S3	CR 445: S9
CR 156: D10	CR 271: B8	CR 310: H5, H6	CR 355: S3	CR 445: S9
CR 157: D10	CR 272: B8	CR 310: H5, H6	CR 355: S3	CR 445: S9
CR 158: D10	CR 273: B8	CR 310: H5, H6	CR 355: S3	CR 445: S9
CR 159: D10	CR 274: B8	CR 310: H5, H6	CR 355: S3	CR 445: S9
CR 160: D10	CR 275: B8	CR 310: H5, H6	CR 355: S3	CR 445: S9
CR 161: D10	CR 276: B8	CR 310: H5, H6	CR 355: S3	CR 445: S9
CR 162: D10	CR 277: B8	CR 310: H5, H6	CR 355: S3	CR 445: S9
CR 163: D10	CR 278: B8	CR 310: H5, H6	CR 355: S3	CR 445: S9
CR 164: D10	CR 279: B8	CR 310: H5, H6	CR 355: S3	CR 445: S9
CR 165: D10	CR 280: B8	CR 310: H5, H6	CR 355: S3	CR 445: S9
CR 166: D10	CR 281: B8	CR 310: H5, H6	CR 355: S3	CR 445: S9
CR 167: D10	CR 282: B8	CR 310: H5, H6	CR 355: S3	CR 445: S9
CR 168: D10	CR 283: B8	CR 310: H5, H6	CR 355: S3	CR 445: S9
CR 169: D10	CR 284: B8	CR 310: H5, H6	CR 355: S3	CR 445: S9
CR 170: D10	CR 285: B8	CR 310: H5, H6	CR 355: S3	CR 445: S9
CR 171: D10	CR 286: B8	CR 310: H5, H6	CR 355: S3	CR 445: S9
CR 172: D10	CR 287: B8	CR 310: H5, H6	CR 355: S3	CR 445: S9
CR 173: D10	CR 288: B8	CR 310: H5, H6	CR 355: S3	CR 445: S9
CR 174: D10	CR 289: B8	CR 310: H5, H6	CR 355: S3	CR 445: S9
CR 175: D10	CR 290: B8	CR 310: H5, H6	CR 355: S3	CR 445: S9
CR 176: D10	CR 291: B8	CR 310: H5, H6	CR 355: S3	CR 445: S9
CR 177: D10	CR 292: B8	CR 310: H5, H6	CR 355: S3	CR 445: S9
CR 178: D10	CR 293: B8	CR 310: H5, H6	CR 355: S3	CR 445: S9
CR 179: D10	CR 294: B8	CR 310: H5, H6	CR 355: S3	CR 445: S9
CR 180: D10	CR 295: B8	CR 310: H5, H6	CR 355: S3	CR 445: S9
CR 181: D10	CR 296: B8	CR 310: H5, H6	CR 355: S3	CR 445: S9
CR 182: D10	CR 297: B8	CR 310: H5, H6	CR 355: S3	CR 445: S9
CR 183: D10	CR 298: B8	CR 310: H5, H6	CR 355: S3	CR 445: S9
CR 184: D10	CR 299: B8	CR 310: H5, H6	CR 355: S3	CR 445: S9
CR 185: D10	CR 300: B8	CR 310: H5, H6	CR 355: S3	CR 445: S9
CR 186: D10	CR 301: B8	CR 310: H5, H6	CR 355: S3	CR 445: S9
CR 187: D10	CR 302: B8	CR 310: H5, H6	CR 355: S3	CR 445: S9
CR 188: D10	CR 303: B8	CR 310: H5, H6	CR 355: S3	CR 445: S9
CR 189: D10	CR 304: B8	CR 310: H5, H6	CR 355: S3	CR 445: S9
CR 190: D10	CR 305: B8	CR 310: H5, H6	CR 355: S3	CR 445: S9
CR 191: D10	CR 306: B8	CR 310: H5, H6	CR 355: S3	CR 445: S9
CR 192: D10	CR 307: B8	CR 310: H5, H6	CR 355: S3	CR 445: S9
CR 193: D10	CR 308: B8	CR 310: H5, H6	CR 355: S3	CR 445: S9
CR 194: D10	CR 309: B8	CR 310: H5, H6	CR 355: S3	CR 445: S9
CR 195: D10	CR 310: B8	CR 310: H5, H6	CR 355: S3	CR 445: S9