



Deep East Texas Council of  
Governments

---

# Regionally Coordinated Transportation Plan 2017

2/28/2017



## Table of Contents

Executive Summary .....	4
I. Introduction.....	6
Purpose of the Study.....	6
II. Transportation Resources In The Region .....	8
III. Comprehensive Needs Assessment and Gap Analysis .....	22
Geographic data .....	22
Transit Needs Index.....	36
IV. Planning for Comprehensive Services .....	50
V. Integrated Planning Processes .....	51
VI. Vision, Mission, Goals and Objectives .....	52
VII. Sustain Planning & Implement Plan.....	55
VIII. Performance Measures to Evaluate Effectiveness .....	56

## Figures

Figure II-1 Transportation Service Providers: Angelina County.....	10
Figure-II-2 Transportation Service Providers: Houston County .....	11
Figure-II-3 Transportation Service Providers: Jasper County .....	12
Figure-II-4 Transportation Service Providers: Nacogdoches County .....	13
Figure-II-5 Transportation Service Providers: Newton County.....	14
Figure-II-6 Transportation Service Providers: Polk County .....	15
Figure-II-7 Transportation Service Providers: Sabine County .....	16
Figure-II-8 Transportation Service Providers: San Augustine County.....	17
Figure-II-9 Transportation Service Providers: San Jacinto County .....	18
Figure-II-10 Transportation Service Providers: Shelby County .....	19
Figure-II-11 Transportation Service Providers: Trinity County.....	20
Figure-II-12 Transportation Service Providers: Tyler County .....	21
Figure III-1 - Major Employees .....	30
Figure III-2 Transit Needs Index: Angelina County .....	37
Figure III-3 Transit Needs Index: Houston County.....	38
Figure III-4 Transit Needs Index: Jasper County.....	39
Figure III-5 Transit Needs Index: Nacogdoches County.....	40
Figure III-6 Transit Needs Index: Newton County .....	41
Figure III-7 Transit Needs Index: Polk County.....	42
Figure III-8 Transit Needs Index: Sabine County .....	43
Figure III-9 Transit Needs Index: San Augustine County .....	44
Figure III-10 Transit Needs Index: San Jacinto County .....	45
Figure III-11 Transit Needs Index: Shelby County .....	46
Figure III-12 Transit Needs Index: Trinity County .....	47
Figure III-13 Transit Needs Index: Tyler County.....	48



## Tables

---

Table II-1 Inventory of Transportation Resources in the DETCOG Region .....	9
Table III-1 Population.....	23
Table III-2 Projected Population .....	23
Table III-3 Projected Employment Growth .....	24
Table III-4 Ethnic/Racial Composition .....	24
Table III-5 Age Characteristics.....	25
Table III-6 Persons with Disabilities .....	25
Table III-7 Median Household Income .....	26
Table III-8 Low-Vehicle Households.....	26
Table III-9 Veteran Population.....	27
Table III-10 Health and Human Services Agencies .....	28
Table III-11 Major Employers .....	31

## Appendices

---

Appendix A Meeting Agenda & Notes
Appendix B Public Hearing Sign-In Sheets
Appendix C Surveys
Appendix D Public Comments
Appendix E Press Releases & Media
Appendix F Additional Support Documentation



## Executive Summary

---

Deep East Texas Council of Governments (DETCOG), the Lead Agency for Transit Planning for Deep East Texas is a voluntary association of counties, cities, independent school districts, river authorities, soil and water conservation districts, hospital districts and sustaining private industry members which serves a 12-county rural region covering roughly 9,790 square miles. The region is largely rural, with four national forests, and a number of lakes and reservoirs including Lake Livingston, Sam Rayburn Reservoir and Toledo Bend Reservoir. The purpose of the Regionally Coordinated Transportation Planning effort is to provide more efficient and effective public transportation services, especially for priority populations including individuals with disabilities, individuals 65 and older, people with low incomes, veterans, children, and others. The focus of the Regionally Coordinated Transportation Plans was to pinpoint the transit needs of older adults, low income persons and individuals with disabilities and prioritize services for these specific populations.

DETCOG through its outreach efforts identified approximately 22 service providers within the 12-county region, four providers offer services to all 12 counties, this is through demand-response: door to door services by either private car services or cab services. Several services are offered by Health and Human Service providers; however the services are limited to those who meet specific eligibility requirements, such as medical emergency, medical non-emergency, Medicaid, or some other medical service type of need. The Brazos Transit District (BTD) provides transportation services to the DETCOG region. These services are open to the general public. BTD serves the cities of Lufkin and Nacogdoches, and the counties of Houston, Polk, San Jacinto, and Trinity. These counties are located in the Western portion of the DETCOG region. Within the cities of Lufkin and Nacogdoches, BTD operates fixed route and complementary ADA Paratransit, as well as Demand & Response services. In Lufkin fixed routes are operated within the City of Lufkin, a fixed route is operated between the cities of Lufkin and Diboll (Angelina), and an express circulator route is operated between Diboll (Angelina), Lufkin and Nacogdoches. In Nacogdoches, BTD operates fixed route and complementary ADA Paratransit, as well as Demand & Response services within the city of Nacogdoches. In Houston, Trinity, Polk, and San Jacinto Counties, BTD provides Demand & Response services throughout the entire county. BTD also operates a shuttle for veterans; this shuttle runs daily between Lufkin (one stop in Livingston) and the VA Hospital in Houston, Texas.

Jasper is currently is the most heavily populated county that currently does not have transit services that are offered to the general public. As population continues to grow in the westernmost counties, transit service will become a crucial factor in maintaining current services and introducing new services to keep up with growth. The six easternmost counties (Jasper, Newton, Sabine, San Augustine, Shelby, and Tyler) experience gaps in service as they do not have and form of public transit service. They have some providers that provide service through health and humans service provider, however those services are limited to those that meet medical eligibility. There has been the expansion of addition transportation services through, non-profit organizations (employees only) and private cab or car service. Although limited, transportations options are growing and there is an opportunity to look at additional funding sources and/or organizations that may be willing to expand their service boundaries. Newton had the least amount of transportation service providers with 3, while Angelina and Nacogdoches had the most transportation service providers with 12.

The DETCOG region has a total population of 378,477 according to 2010 census data and a low population density. Over half of the region's population is located in the three most populous counties, Angelina, Nacogdoches, and Polk. Angelina County is by far the most populated area in the region, and the city of Lufkin serves as the region's major service center. The population has grown by almost 74,000 people (24 percent) in the past 20 years. The growth of San Jacinto county (64 percent) has outpaced growth in the other eleven



## Regionally Coordinated Transportation Plan 2017

---

counties, with Polk County being the next fastest growing (49 percent), followed by the remaining counties in the DETCOG region. The region is projected to grow by an estimated 44,000 (12 percent) from 2010 to 2040. Polk County is projected to be the fastest growing County within the region (55 percent), followed by Trinity County (32 percent), and Nacogdoches County (20 percent). The remaining nine counties are either growing slowly in or will experience a decline in population. By 2018, employment is expected to increase by approximately 13 percent in the DETCOG region. The education and health service will be the fastest growing with an increase of approximately 26 percent by 2018. There are several major employers in the DETCOG region, with the largest concentration of employment in Nacogdoches and Angelina Counties. The major employers include education institutions, medical facilities, correctional institutions, poultry manufacturers and government entities.

Most services are provided to providers through 5310 funding, Health and Human Services (HHS), Texas Workforce Programs, or private transportation services. As DETCOG concentrates on goals for the community that are most achievable during the coordinated planning period, they will continue to champion awareness and notify providers when funding or other opportunities become available. One of the goals of this Regionally Coordinated Transportation Plan Update 2017 is to integrate the planning process while developing this plan with the goals of the region. City and county plans were identified and reviewed for transportation elements. While most cities and counties in the DETCOG region did not have a long range plan or comprehensive plan a few plans were identified. The City of Lufkin comprehensive plan is in progress and no data was available at the time of this Study. The Cities of Ivanhoe and Zavalla also are working on plans that were not available at the time of this Study. The City of Center has a comprehensive plan, although there was not a transit component, there is a description of their thoroughfare plan and identified goals to include hike and bike trails along abandoned railroad rights-of-way. The workforce provides bus passes or gas cards to their clients that have transportation needs as indicated in their Operation Plan.

The 2016 vision for the Regionally Coordinated Transportation Plan Update is: "We are a 12-county Council of Governments that works to improve the safety and well-being of its citizens and assist them in improving the quality of their lives."

Brazos Transit District is the general public provider for the five of the six counties that are currently without public transportation and both BTDC and the counties are working on adding service to those areas. While Newton County does not have a designated provider BTDC is interested in providing the service for the county. Newton County and BTDC have begun conversations regarding future service. To help improve service in all counties BTDC is willing to partner with sub-recipients to support them in grant oversight.



## I. Introduction

---

Deep East Texas Council of Governments (DETCOG), the Lead Agency for Transit Planning for Deep East Texas is a voluntary association of counties, cities, independent school districts, river authorities, soil and water conservation districts, hospital districts and sustaining private industry members which serves a 12-county rural region. The DETCOG region covers 9,790 square miles in a 12-county area. According to 2010 U.S. Census estimates, there are over 370,000 persons within the DETCOG region.

Transit is provided in the DETCOG region by a number of providers including BTD (Brazos Transit) and many health and human service agencies (HHS). Services offered by HHS providers are limited to those who meet specific eligibility requirements, such as medical emergency, medical non-emergency, Medicaid, or some other medical service type of need. These eligibility requirements prohibit the general public from utilizing transit services provided by these agencies. However, those in the six easternmost counties rely heavily on these services or other forms of private transportation

Brazos Transit provides transportation services that are open to the general public to the DETCOG region. BTD serves the cities of Lufkin and Nacogdoches, and the counties of Houston, Polk, San Jacinto, and Trinity. These counties are located in the western portion of the DETCOG region. Within the cities of Lufkin and Nacogdoches, Brazos Transit operates fixed route and complementary ADA Paratransit, as well as Demand & Response services. In Lufkin fixed routes are operated within the City of Lufkin, a fixed route is operated between the cities of Lufkin and Diboll. In Nacogdoches, BTD operates fixed route and complementary ADA Paratransit, as well as Demand & Response services within the city of Nacogdoches. In Houston, Trinity, Polk, and San Jacinto Counties, BTD provides Demand & Response services throughout the entire county. BTD also operates a shuttle for veterans; this shuttle runs daily between Lufkin (one stop in Livingston) and the Veteran Affairs Hospital in Houston, Texas.

### *Purpose of the Study*

The purpose of the Regionally Coordinated Transportation Planning effort is to provide more efficient and effective public transportation services, especially for priority populations including individuals with disabilities, individuals 65 and older, people with low incomes, veterans, children, and others. The Texas Department of Transportation (TxDOT) provides funding every five years to update coordinated plans. This process is competitive and open only to designated lead agencies. The initial DETCOG Regionally Coordinated Transportation Plan was developed in 2006 to provide agencies with a comprehensive strategy for public transportation in their region. The focus of the Regionally Coordinated Transportation Plans was to identify the transit needs of older adults, low income persons and individuals with disabilities and prioritize services for these specific populations. The Regionally Coordinated Transportation Plan looks at various providers such as public, private, non-profit, health and human service agencies and other stakeholders who have an interest in the outcome of the plan to identify types of service within the region and how these service can work together to meet the needs of its citizens. Regional Coordinated Transportation Plans work closely with Stakeholder groups to help them identify needs and determine how services should be coordinated.



# Regionally Coordinated Transportation Plan 2017

---

DETCOG's 2006 Regionally Coordinated Transportation Plan helped identify transportation resources to accommodate the increasing demand from a growing aging population. In 2011 the original plan from 2006 was updated. The purpose of the 2011 update was to evaluate the existing transit services and recommend adjustments that will better serve the needs of the 12-county region based on demographic changes that had occurred since 2006. Below are several elements that were included in the 2011 plan:

- Assessing transportation needs for older individuals, low income persons and those individuals who have disabilities
- An inventory of available services in the region to help identify overlaps and gaps
- Strategies that address gaps in service
- Efficient use of services to reduce duplication
- Prioritize implementation strategies
- Identify future sustainable funding resources

The updated 2016 plan will identify projects in the region that should be implemented to help address transportation needs for the target population. The projects identified in this plan will then be incorporated into short and long range plans for the DETCOG region rather it be through DETCOG, counties or cities within the region.

The current Regionally Coordinated Transportation Plan Update began in 2015 with an extensive outreach effort, consisting of focus groups, surveys, and public hearings to develop a good base and current providers within the 12-county region. DETCOG staff also continued to hold several meetings both with the public and key stakeholders to help identify the needs of the region.

Additionally, a comprehensive list of transportation providers in the region was compiled to identify the transportation resources that are available to the region. The analyses in this update provide a review of those population segments that are currently or potentially transit dependent within the DETCOG area. Potential transit dependent population are those segments of the population that, because of demographic characteristics, such as, age, disability, income, or lack of automotive availability, may potentially require transit services to meet their mobility needs. These transportation dependent segments of the population include elderly persons (age 65 or over), disabled or mobility limited persons, persons living below the poverty level, and households with no autos. Census data and demographic projections are included.



## II. Transportation Resources In The Region

---

DETCOG through its outreach efforts identified approximately 22 service providers within the 12-county region, four providers offer services to all 12 counties, this is through demand-response, door to door services by either private car services or cab services. Several services are offered by Health and Human Service providers; however the services are limited to those who meet specific eligibility requirements, such as medical emergency, medical non-emergency, Medicaid, or some other medical service type of need. These eligibility requirements prohibit the general public from utilizing transit services provided by these agencies. However, those in the six easternmost counties rely heavily on these services or other forms of private transportation. BTD (Brazos Transit) provides transportation services to the DETCOG region. These services are open to the general public. BTD serves the cities of Lufkin and Nacogdoches, and the counties of Houston, Polk, San Jacinto, and Trinity. These counties are located in the Western portion of the DETCOG region. Within the cities of Lufkin and Nacogdoches, BTD operates fixed route and complementary ADA Paratransit, as well as Demand & Response services. In Lufkin fixed routes are operated within the City of Lufkin, a fixed route is operated between the cities of Lufkin and Diboll (Angelina), and an express circulator route is operated between Diboll (Angelina), Lufkin and Nacogdoches. In Nacogdoches, BTD operates fixed route and complementary ADA Paratransit, as well as Demand & Response services within the city of Nacogdoches. In Houston, Trinity, Polk, and San Jacinto Counties, BTD provides Demand & Response services throughout the entire county. BTD also operates a shuttle for veterans; this shuttle runs daily between Lufkin (one stop in Livingston) and the VA Hospital in Houston, Texas.

**Table II-1 Inventory of Transportation Resources in the DETCOG Region** on the following page shows all providers, inclusive of Texas Workforce and HHS agencies in the region including the location of service provided as well as the type of service provided. **Figure II-1 through Figure-II-12** show the service coverage throughout the 12-County region.



Table II-1 Inventory of Transportation Resources in the DETCOG Region

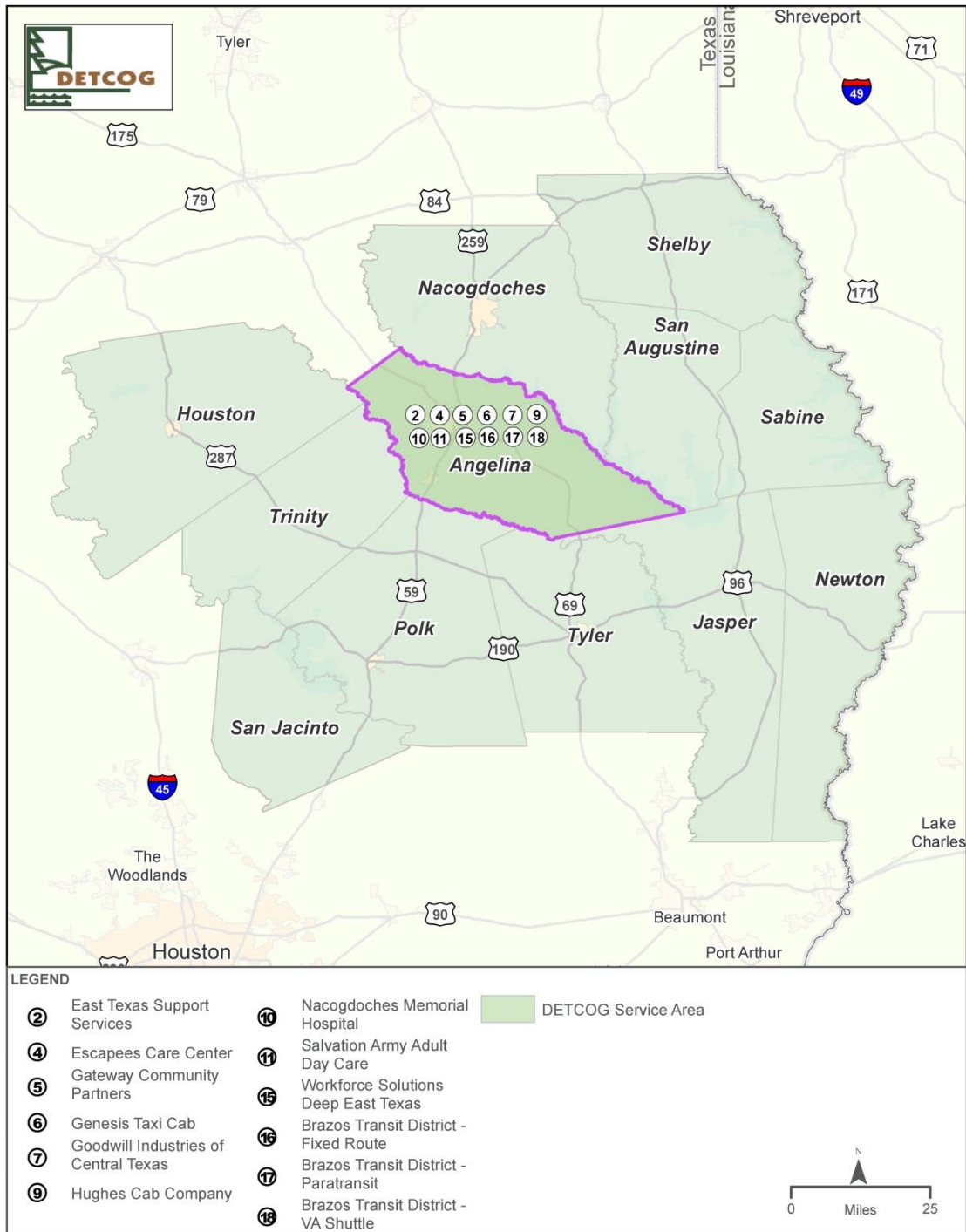
AGENCY NAME	AGENCY TYPE	TYPE OF SERVICE	LOCATION	SERVICE AREA	NO. OF VEHICLES	VEHICLE TYPE	RESTRICTIONS	HOURS OF OPERATION	FUNDING	OWNER	NO. OF EMPLOYEES	CONTACT
Alabama Coushatta Tribe of Texas	Tribe Transportation	Shuttle (By appointment only)	Livingston	Within the Reservation	4	N/A	Yes-Tribal members only	Varies	Tribe funded	Tribe	4	Carlos Bullock
Brazos Transit District*	Transit Service	Demand-Response Transit	Bryan	Houston County, Polk County, San Jacinto County, Trinity County	38 (58 total fleet)		N/A	5 AM - 7 PM / M - F (excluding holidays)	Federal and State Funding	Brazos Transit	9	Wendy Weedon
Brazos Transit District*	Transit Service	Fixed-Route Transit	Bryan	Nacogdoches and Lufkin	20 (58 total fleet)		N/A	5 AM - 7 PM / M - F (excluding holidays)	Federal and State Funding	Brazos Transit	9	Wendy Weedon
Brazos Transit District*	Transit Service	Paratransit	Bryan	Nacogdoches and Lufkin	38 (58 total fleet)		Yes - ADA (persons with disabilities)	5 AM - 7 PM / M - F (excluding holidays)	Federal and State Funding	Brazos Transit	9	Wendy Weedon
Brazos Transit District*	Transit Service	VA Shuttle	Lufkin	Lufkin to City of Houston (stop in Livingston)	1 (58 total fleet)	50-foot charter	Veterans only	7 -2:30 PM / M-F (excluding holidays)	Federal and State Funding ( Funding for bus from the TLL Temple Family Foundation)	Brazos Transit	9	Wendy Weedon
Dago Taxi	Taxi Service	Dial-a Ride	Huntsville	N/A	N/A		N/A	N/A	Fare Collection	Private Owner	N/A	(936) -594-0410
East Texas Support Services	Medical Transportation	Shuttle (By appointment only)	Jasper	12 County DETCOG Region; Hardin, Jefferson and Orange Counties	80	Ambulatory and wheelchair accessible minivans	Yes-Medical only	5 AM - 7 PM / M - S	Fare collection	East Texas Support Services	46 (drivers)	Terry Hicks (409) -384-9006
Elite Cab Co. - Medical Transport	Non- Emergency Medical Taxi	Shuttle (By appointment only)	Nacogdoches	Nacogdoches County (Some Center and San Augustine cities)	2	8-passenger Van 4-passenger vehicle	N/A	24/7	Fare collection	Private Owner	4	John Sessions (936) -645-1185
Escapees Care Center	Non-profit Medical Transportation	Shuttle (By appointment only)	Livingston	Mostly City of Houston, Humble, Lufkin and other nearby areas	4	N/A	Yes - Residents only	As needed	N/A	Care Center Agency	6	Crystal Saulters
Gateway Community Partners	Non-profit Organization	Shuttle (MHMR individuals)	Lufkin	Huntington, Diboll, Palestine, Lufkin, Huntsville	4	3 Vans (15 Passengers) 1 Trolley (9 seats)	Yes-Elderly and persons with disabilities including mental handicaps	Based on workshop times	Non-profit organization	Private Owner	5	Michelle Barlow
Genesis Taxi Cab	Taxi Service	Dial-a-Ride	Lufkin	Lufkin, Nacogdoches, Livingston, Jacksonville, Alto	1	8-passenger Van	No	8 AM - 8 PM M-F 8 AM - 10 PM S-S	Fare collection	Private Owner	2	Monica Gibson (936) -404-8264
Goodwill Industries of Central East Texas	Non-profit Organization	Carpooling (employees only)	Lufkin	Angelina, Houston, Trinity, San Augustine, Nacogdoches, Sabine	Personal vehicles for carpool	N/A	Yes-Goodwill Employers only	As needed	Individuals are reimbursed by Goodwill	Private Owners	10	Kristy Bice
Hughes Cab Company	Taxi Service	Dial-a-Ride	Lufkin	Service to all areas	1	8-passenger Van	No	7 AM - 10 PM / M - S	Fare collection	Private Owner	2	Paul Hughes (936) -637-6388
Nac Cab	Taxi Service	Dial-a-Ride	Nacogdoches	Nacogdoches County	2	4- passenger Vehicles	N/A	24/7	Fare collection	Private Owner	2	Lewis Mora (936) -553-2460
Nacogdoches Memorial Hospital	Medical Transportation	Dial-a-Ride (referral by agencies)	Nacogdoches	Tyler, Jefferson, Hardin, Jasper, Polk, Angelina, Nacogdoches, Sabine, Shelby, San Jacinto, Portions of Liberty	45	Vans 4-6 seats	Yes-Medical only	M - S	Vendor agreement	Non-profit	110	Toni Talent (936) -564-4611
Salvation Army Adult Day Care	Non-profit Organization	Shuttle (Day Car clients)	Lufkin	15 mile radius	1	12 passenger bus	Day Care clients only	As needed	State Funding (Dept. of Human and Health Services)	Brazos Transit	1	Merline Lott
Stephen F. Austin State University	University Campus Transportation	Campus Shuttle (pick up points)	Nacogdoches	Stephen F. Austin University Campus only	N/A	N/A	Yes- For students only	M - F (daytime) S - Th (evening)	N/A	N/A	N/A	Stina Herrera
Trinity County Indigent Health Care	Emergency Medical Service	Ambulatory (emergency service)	Groveton	Groveton	N/A	Ambulatory	Yes-Healthcare program only	Need based	State funded (when over budget)	Groveton EMT	N/A	Jennifer Blackstock
United Way	Non-profit Organization	N/A - Do not offer transit service	Angelina County	N/A	N/A	N/A	N/A	N/A	N/A	N/A	N/A	N/A
Veterans Office	Agency	Shuttle	Tyler County	Tyler County to Houston County	N/A	N/A	Yes-Veterans only	N/A	Federal Funding	N/A	N/A	Mary
Watts Transportation	Medical Transportation	Shuttle (By appointment only)	Center	Houston-Galveston; Waco and Dallas/FW	35	Mini -Vans, 3 Suburban's	Yes-Medical only	6 AM - 6 PM / M-F	State Funding	Private Owner	38	Curtis Watts (936) -332-0720
Workforce Solutions Deep East Texas	Temporary Assistance for Needy Families (TANF)	Bus Tokens/Prepaid Gas Cards	Several in the 12 County Region	12 County DETCOG Region	N/A	N/A	Workforce solutions clients and families	N/A	Federal Funding	N/A	N/A	Marilyn Hartsook

\* Service areas within the DETCOG region



# Regionally Coordinated Transportation Plan 2017

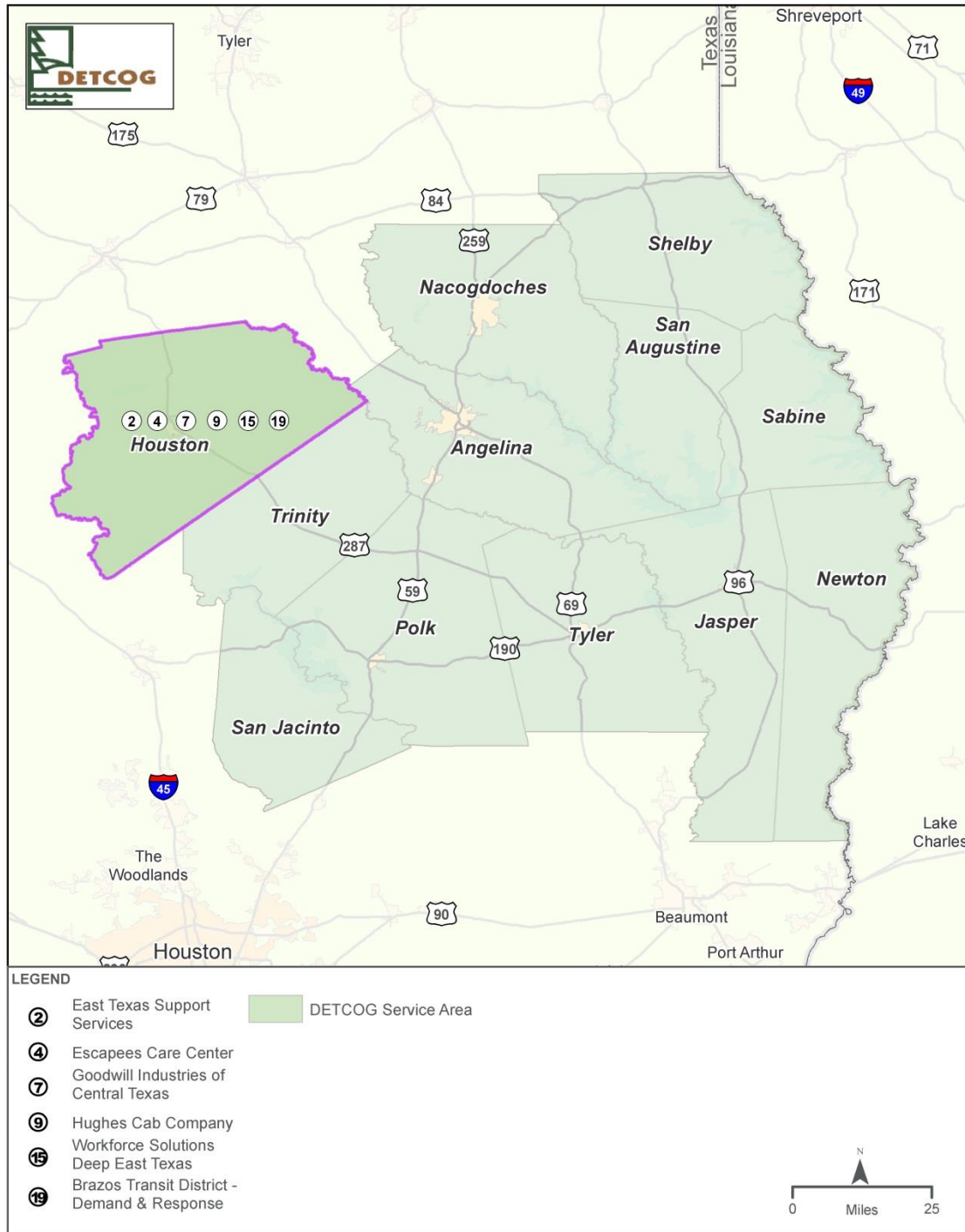
Figure II-1 Transportation Service Providers: Angelina County



## TRANSPORTATION SERVICE PROVIDERS - ANGELINA COUNTY



Figure-II-2 Transportation Service Providers: Houston County



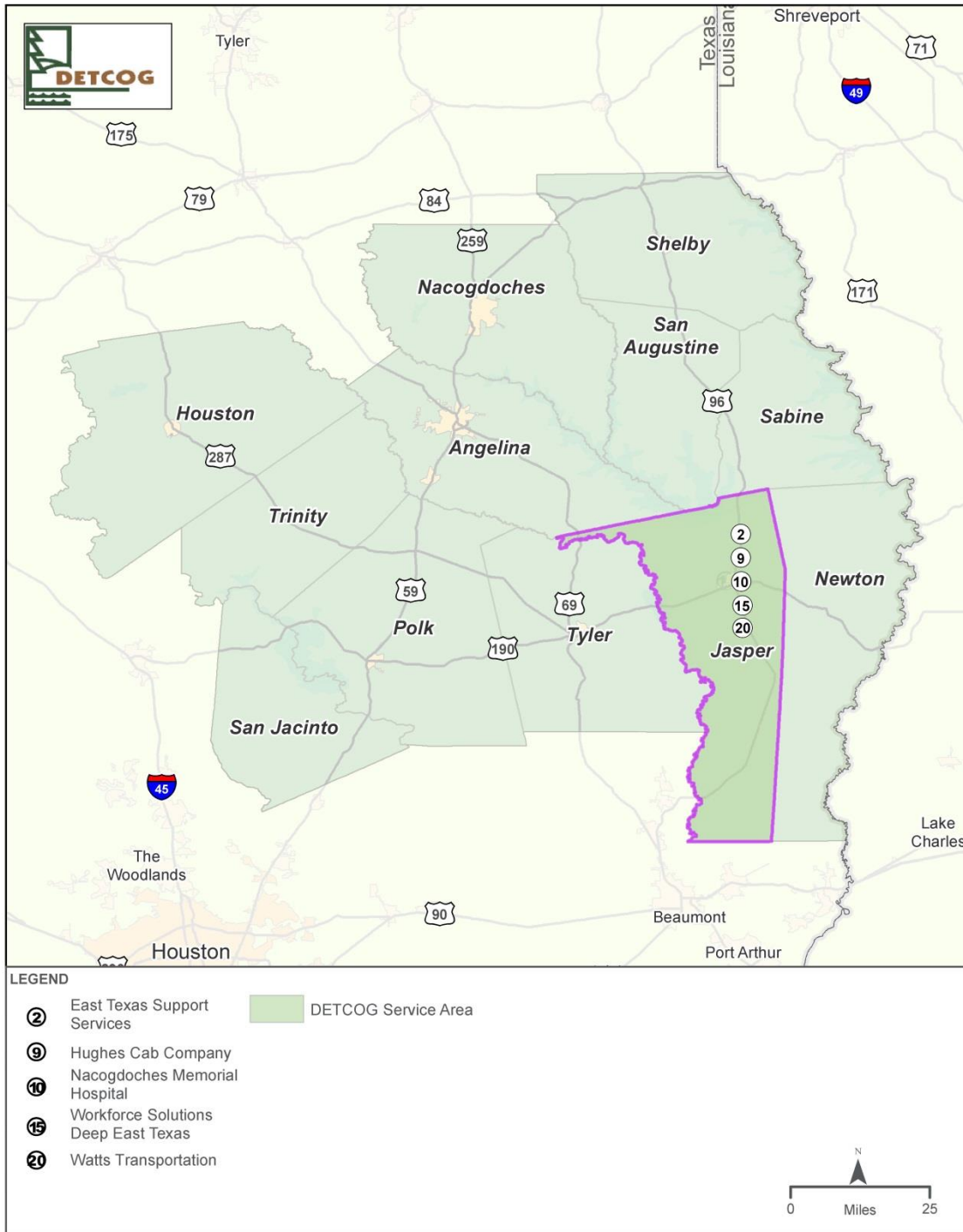
TRANSPORTATION SERVICE PROVIDERS - HOUSTON COUNTY





# Regionally Coordinated Transportation Plan 2017

Figure-II-3 Transportation Service Providers: Jasper County



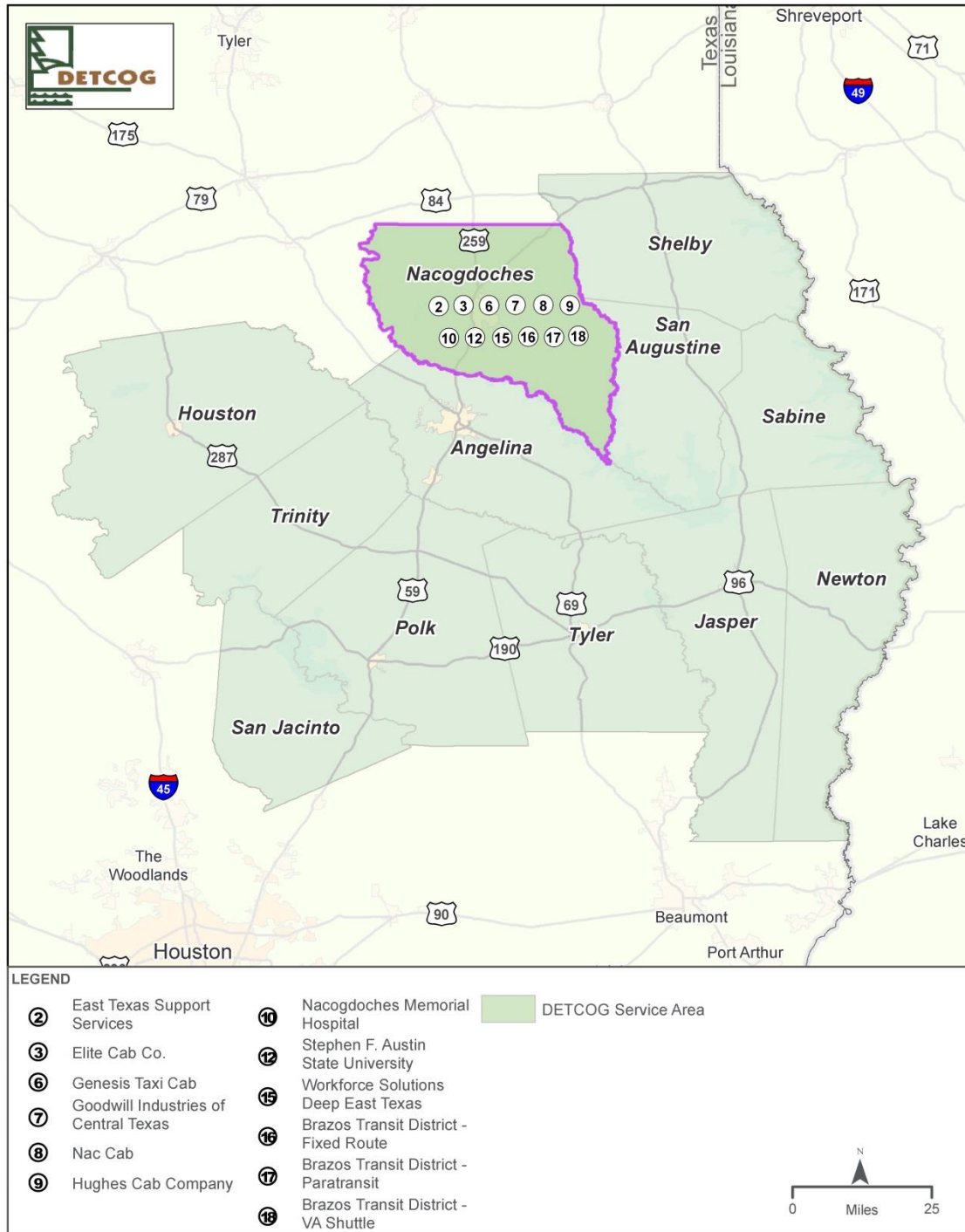
## TRANSPORTATION SERVICE PROVIDERS - JASPER COUNTY







Figure-II-4 Transportation Service Providers: Nacogdoches County

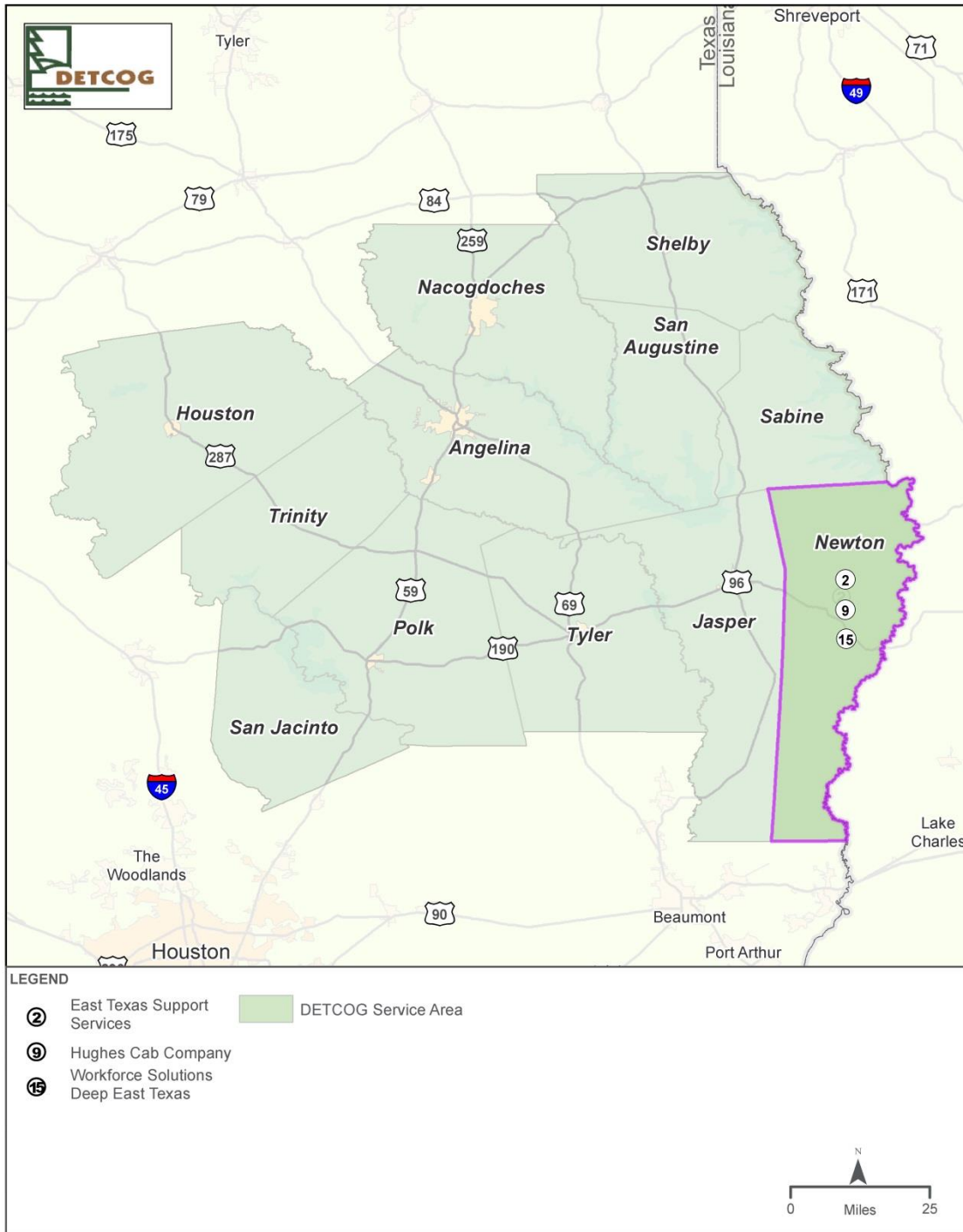


**TRANSPORTATION SERVICE PROVIDERS - NACOGDOCHES COUNTY**





Figure-II-5 Transportation Service Providers: Newton County

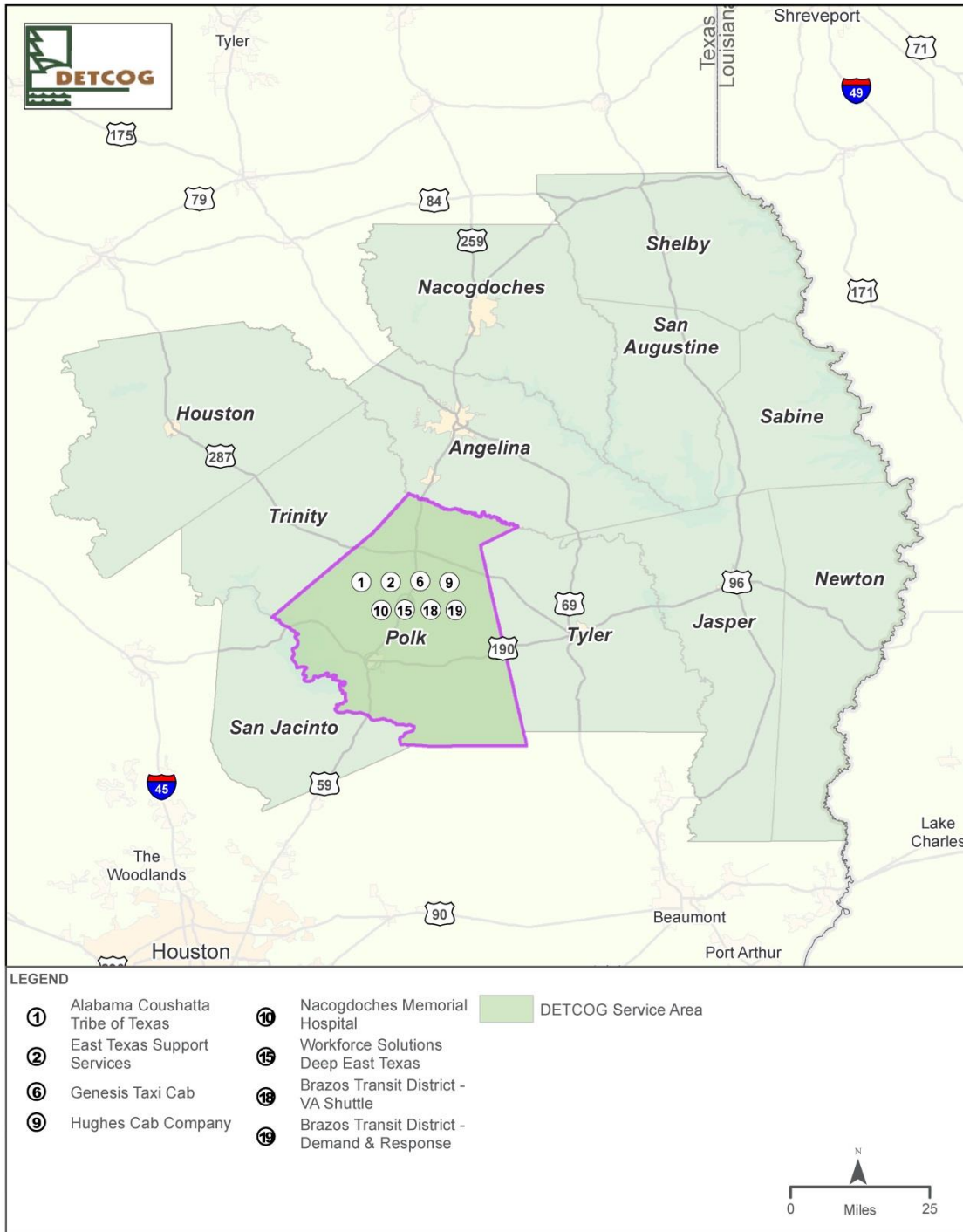


### TRANSPORTATION SERVICE PROVIDERS - NEWTON COUNTY





Figure-II-6 Transportation Service Providers: Polk County

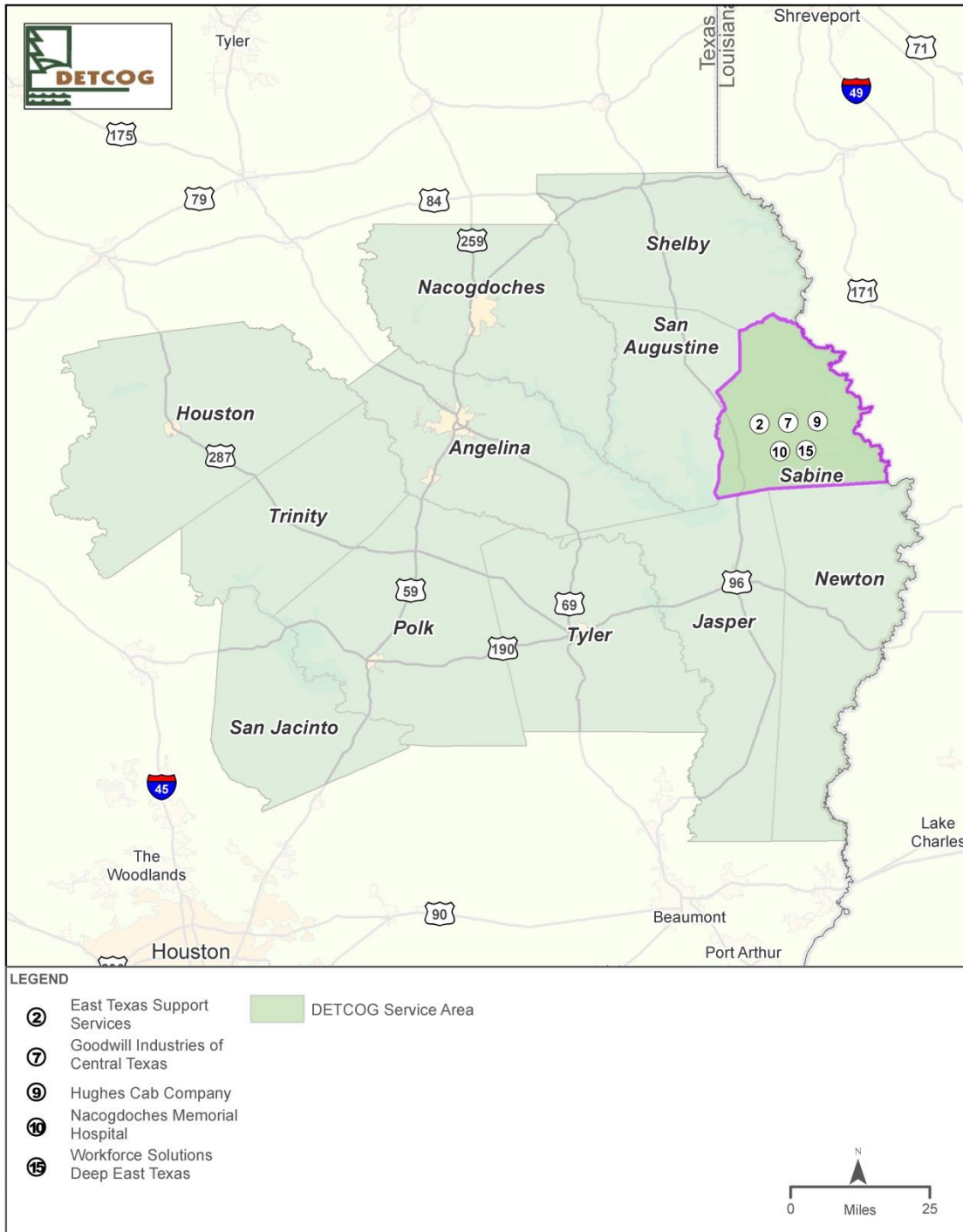


## TRANSPORTATION SERVICE PROVIDERS - POLK COUNTY





Figure-II-7 Transportation Service Providers: Sabine County



### TRANSPORTATION SERVICE PROVIDERS - SABINE COUNTY

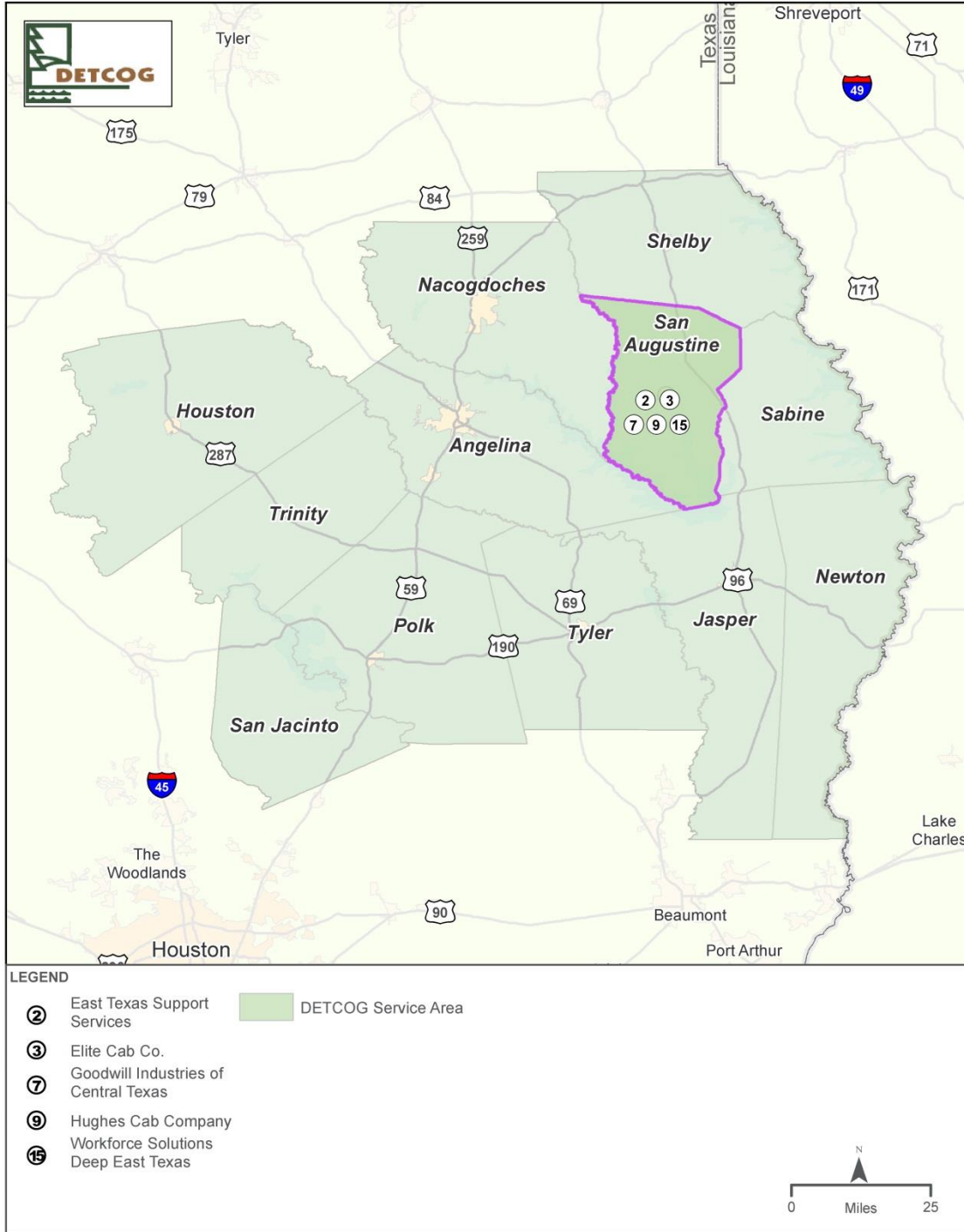






# Regionally Coordinated Transportation Plan 2017

Figure-II-8 Transportation Service Providers: San Augustine County

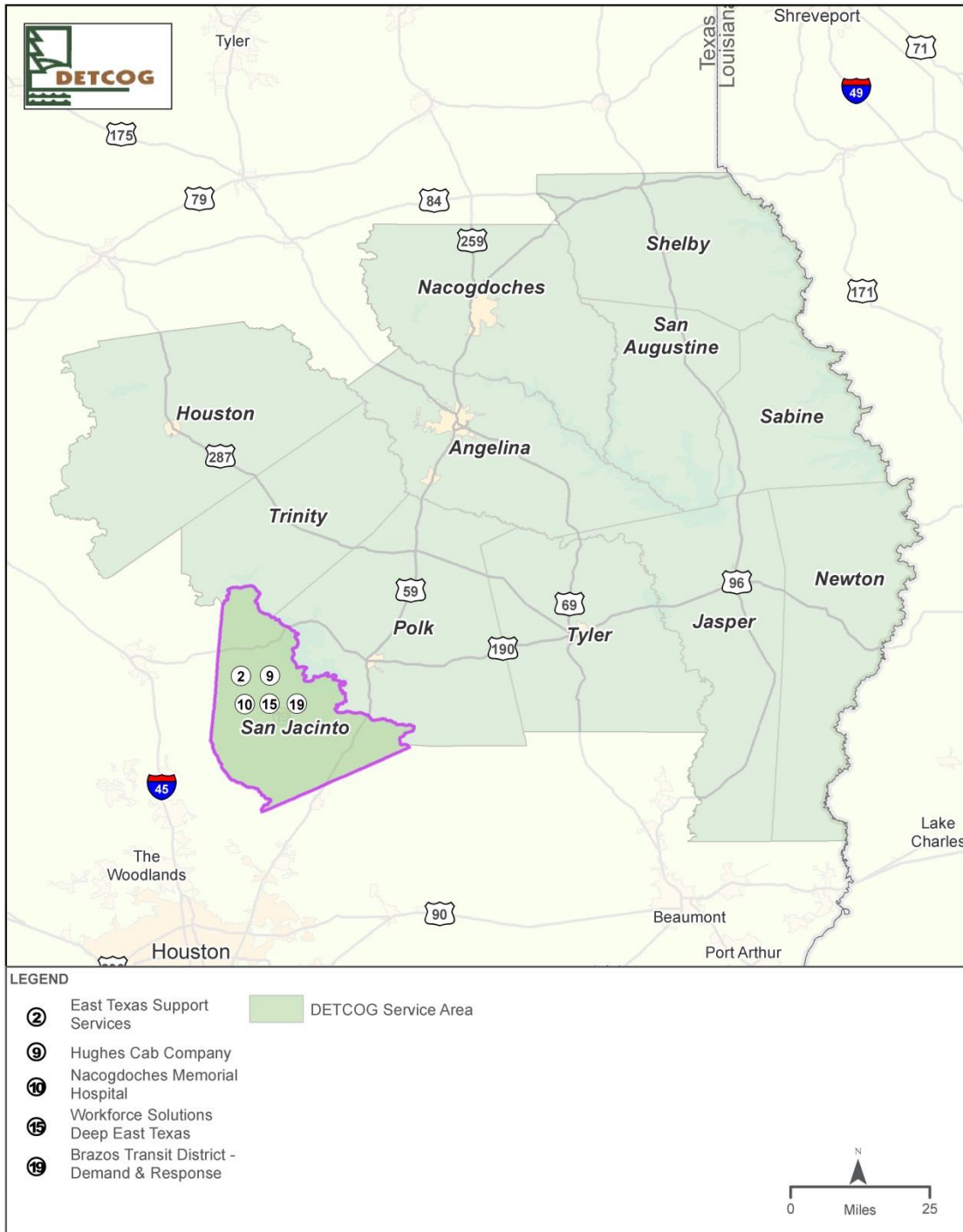


## TRANSPORTATION SERVICE PROVIDERS - SAN AUGUSTINE COUNTY





Figure-II-9 Transportation Service Providers: San Jacinto County



### TRANSPORTATION SERVICE PROVIDERS - SAN JACINTO COUNTY





Figure-II-10 Transportation Service Providers: Shelby County

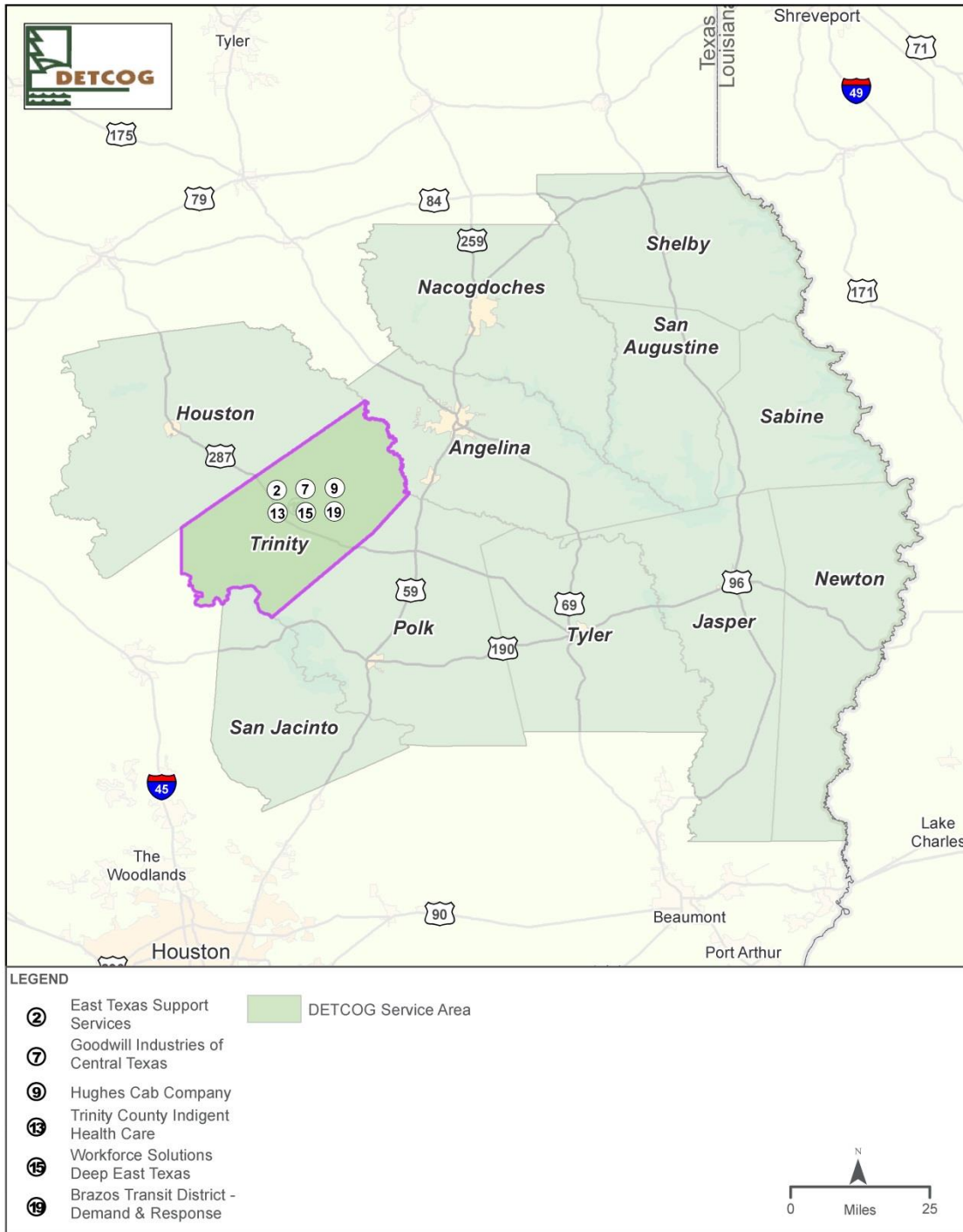


### TRANSPORTATION SERVICE PROVIDERS - SHELBY COUNTY





Figure-II-11 Transportation Service Providers: Trinity County

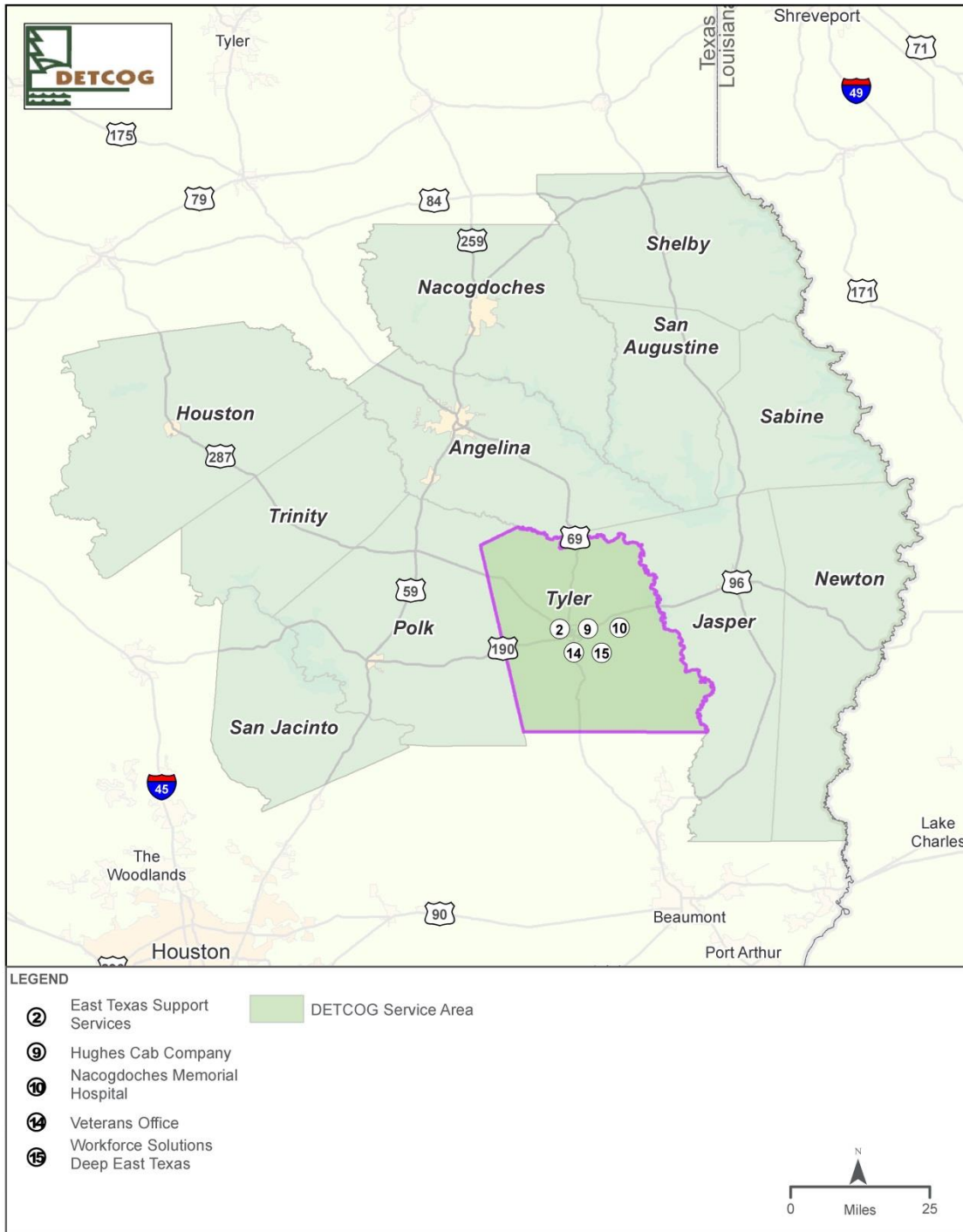


## TRANSPORTATION SERVICE PROVIDERS - TRINITY COUNTY





Figure-II-12 Transportation Service Providers: Tyler County



TRANSPORTATION SERVICE PROVIDERS - TYLER COUNTY





## III. Comprehensive Needs Assessment and Gap Analysis

---

### *Geographic data*

An important first step in evaluating the market demand and potential for existing and future transit service within the counties served by DETCOG is the understanding of existing and projected socio-demographic conditions and other characteristics. Familiarity with the characteristics of the transit market is useful to continuing to provide an attractive transportation alternative, especially for those with no other form of transportation available, while identifying potential new transit service markets.

### *Socio-Demographic Analysis Methodology*

To fully understand the existing need for public transit, it is necessary to assess the socio-demographic conditions and characteristics of the 12-county region. Questions relating to population growth or decline, employment projections, vehicle availability, and other demographic attributes must be answered prior to assessing transportation service demand and needs.

To analyze the population in the DETCOG region the 2000 and 2010 US Decennial Census was used as base socio-economic and demographic data. Given the demographic changes to the region over the past decade, more recent estimates and data forecasts were needed to perform accurate socio-demographic characteristics analysis. To complement the 1990, 2000 and 2010 Census data, the 2010-2014 American Community Survey 5-Year Estimates were also analyzed. 2010 Census data was used where possible but not all 2010 Census data is available for the categories we used for this report. The Census Bureau's Population Estimates Program publishes population numbers between censuses. Estimates from the Population Estimates Program are for the past, meaning in general, estimates released in a given year refer to the population on July 1 of the previous year. These estimates are consistent with the decennial census residence definition of usual residence and represent the Census Bureau's official estimates of updated census counts for these areas. Projections for socio-demographic attributes are also based on past trends and may not be indicative of the actual change in population that will be seen in the 2010 U.S. Census. To monitor the population change, it will be important for the DETCOG region to update the projection analysis on a periodic basis.

Data concerning certain population attributes, including age groups, persons with disabilities, and vehicle available are available at the County level from 1990, 2000, and 2010 Census data only. Other data sets, such as ethnicity/race, and income, are also available as 2006, 2009, and 2010-2014 American Community Survey 5-Year Estimates. Specific data attributes in the DETCOG socio-demographic analysis include the following:

- Population
- Ethnicity/racial composition
- Age characteristics
- Persons with Disabilities
- Employment
- Average household income
- Vehicle availability

Demographic data on overall population, age, race, income, persons with disabilities, persons with limited English proficiency, and other data to indicate need for transportation services.



# Regionally Coordinated Transportation Plan 2017

## Population

Change in population from 1990 to 2014 for each of the 12 counties in the DETCOG region is shown in **Table III-1 Population**. The existing population for the DETCOG region is currently more than 370,000 people. The population has grown by almost 74,000 people (24 percent) in the past 20 years. The growth of San Jacinto county (64 percent) has outpaced growth in the other eleven counties, with Polk County being the next fastest growing (49 percent), followed by the remaining counties in the DETCOG region.

**Table III-1 Population**

YEAR	1990	2000	2009	2010	2014	ESTIMATED GROWTH 1990-2010	TOTAL GROWTH 1990-2014*
Angelina County	69,884	80,130	83,675	86,771	87,433	16,887 (24%)	17,549 (25%)
Houston County	21,375	23,185	22,363	22,732	23,151	1,357 (6%)	1,776 (8%)
Jasper County	31,102	35,604	34,370	35,710	35,826	4,608 (15%)	4,724 (15%)
Nacogdoches County	54,753	59,203	64,117	64,524	65,322	9,771 (18%)	10,569 (19%)
Newton County	13,569	15,072	13,667	14,445	14,323	876 (6%)	754 (6%)
Polk County	30,687	41,133	46,530	45,413	45,757	14,726 (48%)	15,070 (49%)
Sabine County	9,586	10,469	10,208	10,834	10,551	1,248 (13%)	965 (10%)
San Augustine County	7,999	8,946	8,574	8,865	8,777	866 (11%)	778 (10%)
San Jacinto County	16,372	22,246	24,902	26,384	26,831	10,012 (61%)	10,459 (64%)
Shelby County	22,034	25,224	26,812	25,448	25,698	3,414 (15%)	3,664 (17%)
Trinity County	11,445	13,779	13,897	14,584	14,452	3,139 (27%)	3,007 (26%)
Tyler County	16,646	20,871	20,556	21,766	21,552	5,120 (31%)	4,906 (29%)
<b>Total DETCOG</b>	<b>305,452</b>	<b>355,862</b>	<b>369,671</b>	<b>378,477</b>	<b>379,673</b>	<b>72,024 (24%)</b>	<b>74,221 (24%)</b>

Source: U.S. Census Bureau, 1990, 2000 and 2010 Census data; 2009 and 2010-2014 American Community Survey 5-Year Estimates

## As shown in Table III-2 Projected Population

, the DETCOG region is projected to grow by an estimated 44,000 (12 percent) from 2010 to 2040. Polk County is projected to be the fastest growing County within the region (55 percent), followed by Trinity County (32 percent), and Nacogdoches County (20 percent). The remaining nine counties are either growing slowly in or will experience a decline in population.

**Table III-2 Projected Population**

YEAR	2010	2014	2040	PROJECTED GROWTH 2010-2040
Angelina County	86,771	87,433	101,962	15,191 (18%)
Houston County	22,732	23,151	23,665	933 (4%)
Jasper County	35,710	35,826	29,109	- 6,601 - (18%)
Nacogdoches County	64,524	65,322	77,355	12,831 (20%)
Newton County	14,445	14,323	10,677	- 3,768 - (26%)
Polk County	45,413	45,757	70,581	25,168 (55%)
Sabine County	10,834	10,551	8,573	- 2,261 - (21%)
San Augustine County	8,865	8,777	8,144	- 721 - (8%)
San Jacinto County	26,384	26,831	23,306	- 3,078 - (12%)
Shelby County	25,448	25,698	28,397	2,949 (12%)
Trinity County	14,584	14,452	19,235	4,651 (32%)
Tyler County	21,766	21,552	20,166	-1,600 - (7%)
<b>Total DETCOG</b>	<b>378,477</b>	<b>379,646</b>	<b>415,678</b>	<b>43,694 (12%)</b>

Source: U.S. Census Bureaus 2010, 2010-2014 American Community Survey 5-Year Estimates; 2040 - State Data Center 2000-2040 Migration Scenario Projection



# Regionally Coordinated Transportation Plan 2017

## Employment

As shown in **Table III-3 Projected Employment Growth**, employment is divided by category. By 2018, employment is expected to increase by approximately 13 percent in the DETCOG region. The education and health service will be the fastest growing with an increase of approximately 26 percent by 2018.

**Table III-3 Projected Employment Growth**

INDUSTRY	2008	2018	PROJECTED GROWTH 2008-2018	ESTIMATED EMPLOYMENT 2014-2024	ESTIMATED PROJECTED GROWTH 2014-2024
Construction	5,080	5,590	510 (10%)	5,010	5,890
Education & Health Services	32,150	40,080	7,930 (26%)	33,060	39,640
Financial Activities	3,960	4,360	400 (10%)	4,110	4,550
Government	10,220	11,850	1,630 (16%)	9,980	11,300
Information	1,070	1,170	100 (9%)	940	900
Manufacturing	16,370	15,380	-990 (-6%)	13,240	13,520
Natural Resources & Mining	3,170	3,490	320 (10%)	3,370	3,340
Other Services Ex Government	3,590	3,990	400 (11%)	3,640	4,220
Professional & Business Services	7,410	7,840	430 (6%)	6,990	7,860
Trade, Transportation, & Utilities	20,700	22,570	1,870 (9%)	21,340	24,370
Leisure & Hospitality	9,470	11,430	1,960 (21%)	9,910	11,320
<b>Total DETCOG</b>	<b>113,190</b>	<b>127,750</b>	<b>14,560 (13%)</b>	<b>105,299</b>	<b>126,910</b>

Source: Texas Workforce Commission Labor Market Information Employment Projections; Texas Workforce Commission Local Area Unemployment Statistics

## Racial and Ethnic Composition

The largest ethnic/racial group within the DETCOG region is currently White (70 percent), followed by Black (15 percent), and Hispanic (12 percent). Since 1990, the ethnic/racial composition of the population in the area has changed, primarily in the following ways:

- The Hispanic population is growing faster than other groups; from representing 4 percent of the study area population in 1990 to 12 percent in 2009.
- The White population is slowly declining. In 1990, White represented 78 percent of the population and by 2009 this had dropped to 70 percent.
- The proportion of the Black population within the region has declined from 17 percent to 15 percent

**Table III-4 Ethnic/Racial Composition**

YEAR	WHITE	BLACK	HISPANIC	AMERICAN INDIAN	ASIA/PACIFIC ISLANDER	OTHER	TOTAL POPULATION
1990	236,971 (78%)	58,870 (17%)	12,986 (4%)	1,398 (0.5%)	1,028 (0.3%)	199 (0.1%)	305,452 (100%)
2000	260,469 (73%)	58,089 (16%)	30,823 (9%)	1,607 (0.5%)	1,751 (0.5%)	3,123 (0.9%)	355,862 (100%)
2006	263,206 (71%)	57,231 (16%)	40,881 (11%)	1,780 (0.5%)	2,241 (0.6%)	3,219 (0.9%)	368,558 (100%)
2009	259,037 (70%)	56,902 (15%)	45,994 (12%)	1,836 (0.5%)	2,285 (0.6%)	3,617 (1.0%)	369,671 (100%)
2010	266,136 (70%)	58,726 (15%)	49,768 (13%)	2,557 (0.6%)	2,480 (0.6%)	1,190 (0.3%)	378,477 (100%)

Source: U.S. Census Bureau 1990, 2000, and 2010 Census data; 2006 and 2009 estimates





## Age Characteristics

**Table III-5 Age Characteristics** provides the breakdown of the population by age group for each of the 12 counties and the total DETCOG. The population that tends to be the most transit dependent, those under 15 and over 54, represents approximately 43 percent of the total population in the region (133,157 people).

**Table III-5 Age Characteristics**

AGE GROUP	10-14	15-19	20-24	25-34	35-54	55-75+	TOTAL
Angelina County	6,550	6,231	5,470	10,854	22,901	20,194	72,200
Houston County	1,312	1,536	1,083	2,696	6,761	7,710	21,098
Jasper County	2,381	2,406	1,836	4,055	9,421	10,658	30,757
Nacogdoches County	4,040	6,633	8,725	7,962	14,167	14,356	39,959
Newton County	980	1,084	813	1,591	3,956	4,291	12,715
Polk County	2,752	2,753	2,435	5,179	12,271	14,838	40,246
Sabine County	638	621	438	822	2,587	4,659	9,765
San Augustine County	529	543	439	764	2,235	3,363	7,873
San Jacinto County	1,868	1,814	1,290	2,560	7,040	8,503	23,075
Shelby County	1,765	1,816	1,541	2,956	6,541	6,976	21,595
Trinity County	904	856	648	1,330	3,655	5,586	12,979
Tyler County	1,267	1,311	1,316	2,895	5,654	7,037	14,390
<b>Total DETCOG</b>	<b>24,986</b>	<b>27,604</b>	<b>27,032</b>	<b>43,682</b>	<b>97,189</b>	<b>108,171</b>	<b>306,652</b>

Source: U.S. Census Bureau 2010

## Persons with Disabilities

For persons with disabilities, a lack of available transportation options that accommodate their disabilities could be a challenge that demands unique transit services. Sabine and Trinity Counties both have the highest percentage of persons with disabilities; approximately 40 percent. The 1990 census data tracked disabled population differently than in 2000 and because of the inconsistencies between the data collection methods, only U.S. Census Bureau 2010-2014 American Community Survey 5-Year Estimates numbers are presented in **Table III-6 Persons with Disabilities**.

**Table III-6 Persons with Disabilities**

AGE GROUP	TOTAL POPULATION (% DISABLED UNDER THE AGE OF 65 YEARS)
Angelina County	14.7%
Houston County	12.4%
Jasper County	14.8%
Nacogdoches County	10%
Newton County	14.3%
Polk County	12.1%
Sabine County	13.5%
San Augustine County	20.4%
San Jacinto County	12.9%
Shelby County	11.8%
Trinity County	19.4%
Tyler County	16.6%
<b>Total DETCOG</b>	<b>29,073</b>

Source: U.S. Census Bureau 2010-2014 American Community Survey 5-Year Estimates



## Median Household Income

The median household income for each of the 12-county region is shown in **Table III-7 Median Household Income**. In 1990, the average total median household income was \$18,676, increasing to \$34,205 by 2009. Overall, the median household income more than doubled between 1990 and 2009. San Jacinto County has the highest median income (\$42,043) and Newton County saw the greatest increase (120 percent). Conversely, Houston County exhibits the lowest median income (\$31,911) and Tyler County saw the lowest increase (62 percent). In 2014, the median household income almost doubled between 1990 and 2014. San Jacinto County has the highest median income (\$46,969) and San Augustine County exhibits the lowest median income (\$29,293) and Newton County saw the lowest increase (1 percent).

**Table III-7 Median Household Income**

AGE GROUP	1990	2000	2009	CHANGE 1990 - 2009	2014
Angelina County	\$22,986	\$33,806	\$ 37,635	\$ 14,649 (64%)	\$42,374
Houston County	\$18,138	\$28,119	\$ 31,911	\$ 13,773 (76%)	\$32,855
Jasper County	\$20,451	\$30,902	\$ 37,020	\$ 16,569 (81%)	\$39,176
Nacogdoches County	\$19,340	\$28,301	\$ 32,487	\$ 13,147 (68%)	\$39,126
Newton County	\$16,656	\$28,500	\$ 36,611	\$ 19,955 (120%)	\$36,890
Polk County	\$18,968	\$30,495	\$ 32,026	\$ 13,058 (69%)	\$39,412
Sabine County	\$17,512	\$27,198	\$ 32,139	\$ 14,627 (84%)	\$33,951
San Augustine County	\$15,134	\$27,025	\$ 26,660	\$ 11,526 (76%)	\$29,293
San Jacinto County	\$19,867	\$32,220	\$ 42,043	\$ 22,176 (112%)	\$46,969
Shelby County	\$17,446	\$29,112	\$ 31,866	\$ 14,420 (83%)	\$36,250
Trinity County	\$16,963	\$27,070	\$ 36,519	\$ 19,556 (115%)	\$35,223
Tyler County	\$20,647	\$29,808	\$ 33,548	\$ 12,901 (62%)	\$41,630
<b>Total DETCOG</b>	<b>\$18,676</b>	<b>\$29,380</b>	<b>\$ 34,205</b>	<b>\$ 15,530 (83%)</b>	<b>\$37,762</b>

Source: U.S. Census Bureau 1990 and 2000 Census; 2009 and 2010-2014 American Community Survey 5-Year Estimates

## Vehicle Availability

Data relating to the availability of vehicles is an important factor in terms of identifying individuals or potential market sectors that rely on alternate forms of transportation. In some cases, an individual is able to walk or share a ride to their destination; however, a well-coordinated transit network may be able to help meet an individual's overall transportation needs. Of the total 136,151 households in the DETCOG region, approximately six percent (8,203) of households reported "no-vehicle available". Without available public transportation, transportation options for these households are to walk, cycle, share a ride with a friend or family, or hire a private taxi other transportation service if available. As is shown in **Table III-8 Low-Vehicle Households**, Nacogdoches County reported the highest incidence of households without a vehicle available (2,041 households). Angelina County reported the second highest number of households without a vehicle (1,484).

**Table III-8 Low-Vehicle Households**

COUNTY	NO VEHICLES	1 VEHICLE	2 VEHICLES	3 OR MORE VEHICLES	TOTAL HOUSEHOLDS
Angelina County	1,484	10,789	12,731	5,836	30,840
Houston County	620	2,826	3,075	1,390	7,911
Jasper County	914	3,975	5,215	2,407	12,511
Nacogdoches County	2,041	8,361	9,228	4,078	23,708
Newton County	76	1,828	1,987	932	4,823



# Regionally Coordinated Transportation Plan 2017

COUNTY	NO VEHICLES	1 VEHICLE	2 VEHICLES	3 OR MORE VEHICLES	TOTAL HOUSEHOLDS
Polk County	696	6,306	7,167	3,026	17,195
Sabine County	164	1,429	1,656	716	3,965
San Augustine County	189	1,261	1,150	517	3,117
San Jacinto County	528	2,482	4,038	2,237	9,285
Shelby County	675	3,251	3,438	2,199	9,564
Trinity County	349	1,799	2,075	855	5,078
Tyler County	467	2,927	2,885	1,875	8,154
<b>Total DETCOG</b>	<b>8,203</b>	<b>47,234</b>	<b>54,645</b>	<b>26,068</b>	<b>136,151</b>

Source: U.S. Census Bureau 2010-2014 American Community Survey 5-Year Estimates

## Veterans

Veterans are often a demographic in need of transportation services, as well as many other services and support. The existing veteran population currently accounts for approximately 30,000. There's been a slight decline in the veteran population since 2000. To support veterans, collaborative efforts with the VA, BTD, and others would continue to help identify transportation needs over the next five years. BTD does recognize transportation needs of veterans and provides a weekday shuttle to the VA hospital in Houston, serving approximately 1,000 veterans monthly.

Table III-9 Veteran Population

YEAR	2000	2014
Angelina County	7,356	6,339
Houston County	2,789	2,116
Jasper County	3,493	2,946
Nacogdoches County	9,606	3,515
Newton County	1,441	1,451
Polk County	5,209	4,510
Sabine County	1,527	1,453
San Augustine County	1,010	933
San Jacinto County	2,933	2,160
Shelby County	2,077	1,748
Trinity County	2,025	1,506
Tyler County	2,700	1,889
<b>Total DETCOG</b>	<b>42,166</b>	<b>30,566</b>

Source: U.S. Census Bureau, 2000 Census data; 2010-2014 American Community Survey 5-Year Estimates

## Health and Human Services Agencies

Health and human service agencies *enhance and protect the health and well-being of all Americans*. From a transportation perspective, these agencies provide a broad range of transportation service options designed to meet the needs of transportation disadvantaged populations including older adults, disabled persons and/or those with lower income. Individuals have different needs and may require a set of different services depending on their abilities, their environment, and the options available in their community.

A comprehensive list of transportation providers in the region was compiled to identify the transportation resources that are available to the region and those that provide services to those persons that may be elderly persons (age 65 or over), disabled or mobility limited persons, persons living below the poverty level, and households with no autos are shown below in **Table III-10 Health and Human Services Agencies**.

**Table III-10 Health and Human Services Agencies**

AGENCY NAME	AGENCY TYPE	TYPE OF SERVICE	LOCATION	SERVICE AREA	NO. OF VEHICLES	VEHICLE TYPE	RESTRICTIONS	HOURS OF OPERATION	FUNDING	OWNER	NO. OF EMPLOYEES	CONTACT
East Texas Support Services	Medical Transportation	Shuttle (By appointment only)	Jasper	12 County DETCOG Region; Hardin, Jefferson and Orange Counties	80	Ambulatory and wheelchair accessible minivans	Yes-Medical only	5 AM - 7 PM / M - S	Fare collection	East Texas Support Services	46 (drivers)	Terry Hicks (409) -384-9006
Escapees Care Center	Non-profit Medical Transportation	Shuttle (By appointment only)	Livingston	Mostly Houston, Humble, Lufkin and other nearby areas	4	N/A	Yes - Residents only	As needed	N/A	Care Center Agency	6	Crystal Saulters
Gateway Community Partners	Non-profit Organization	Shuttle (MHMR individuals)	Lufkin	Huntington, Diboll, Palestine, Lufkin, Huntsville	4	3 Vans (15 Passengers) 1 Trolley (9 seats)	Yes-Elderly and persons with disabilities including mental handicaps	Based on workshop times	Non-profit organization	Private Owner	5	Michelle Barlow
Goodwill Industries of Central East Texas	Non-profit Organization	Carpooling (employees only)	Lufkin	Angelina, Houston, Trinity, San Augustine, Nacogdoches, Sabine	Personal vehicles for carpool	N/A	Yes-Goodwill Employers only	As needed	Individuals are reimbursed by Goodwill	Private Owners	10	Kristy Bice
Nacogdoches Memorial Hospital	Medical Transportation	Dial-a-Ride (referral by agencies)	Nacogdoches	Tyler, Jefferson, Hardin, Jasper, Polk, Angelin, Nacogdoches, Sabine, Shelby, San Jacinto, Portions of Liberty	45	Vans 4-6 seats	Yes-Medical only	M - S	Vendor agreement	Non-profit	110	Toni Talent (936) 564-4611
Salvation Army Adult Day Care	Non-profit Organization	Shuttle (Day Car clients)	Lufkin	15 mile radius	1	12 passenger bus	Day Care clients only	As needed	State Funding (Dept. of Human and Health Services)	Brazos Transit	1	Merline Lott
Trinity County Indigent Health Care	Emergency Medical Service	Ambulatory (emergency service)	Groveton	Groveton	N/A	Ambulatory	Yes-Healthcare program only	Need based	State funded (when over budget)	Groveton EMT	N/A	Jennifer Blackstock
United Way	Non-profit Organization	N/A - Do not offer transit service	Angelina County	N/A	N/A	N/A	N/A	N/A	N/A	N/A	N/A	N/A
Veterans Office	Agency	Shuttle	Tyler	Tyler to Houston	N/A	N/A	Yes-Veterans only	N/A	Federal Funding	N/A	N/A	Mary
Watts Transportation	Medical Transportation	Shuttle (By appointment only)	Center	Houston-Galveston; Waco and Dallas/FW	35	Mini -Vans, 3 Suburbans	Yes-Medical only	6 AM - 6 PM / M-F	State Funding	Private Owner	38	Curtis Watts (936) 332-0720
Workforce Solutions Deep East Texas	Temporary Assistance for Needy Families (TANF)	Bus Tokens/Prepaid Gas Cards	Several in the 12 County Region	12 County DETCOG Region	N/A	N/A	Workforce solutions clients and families	N/A	Federal Funding	N/A	N/A	Marilyn Hartsook

**Health and Human Services Providers**



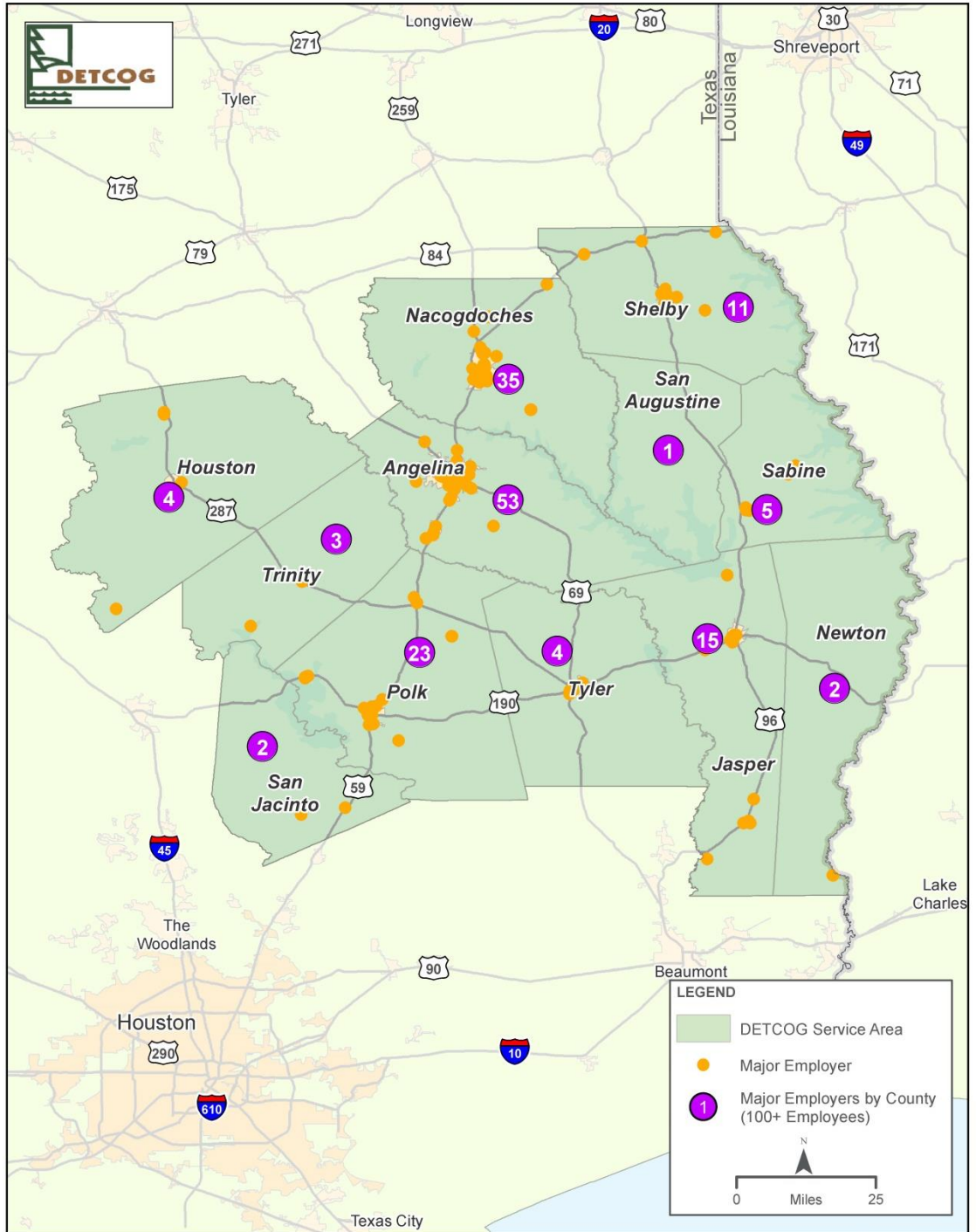
## *Major Employers*

Major employers have a critical impact on a community are vital to the sustainability and progress of the community. Employment Centers are considered trip generators and have employees that may potentially utilize transit services if those services were available. Major employers in the DETCOG region were identified by Census Data and through the Texas Workforce Commission. There are several major employers in the 12-County DETCOG region, with the largest concentration of employment in Nacogdoches and Angelina Counties. The major employers include education institutions, medical facilities, correctional institutions, poultry manufacturers and government entities as shown in **Table III-11 Major Employers**.

As part of the DETCOG Regionally Coordinated Transportation Plan 2017 the study team identified employers in the area that employed 100 or more employees as a means of identifying daily travel patterns in the DETCOG region. The purpose of analyzing this data was to utilize the anecdotal information as one of the basis for formulating transit generators and the need for current and/or future transit services, and identify improvements to increase the efficiency and effectiveness of public transportation in the DETCOG region, as well as identify gaps and barriers.

The map below shows the concentration of employment centers within each county.

Figure III-1 - Major Employers



MAJOR EMPLOYERS



**Table III-11 Major Employers**

EMPLOYERS	CONTACT	DESCRIPTION	PHONE	ADDRESS	# OF EMPLOYEES:	COUNTY
Allstate Insurance	N/A	Insurance-automobile	(409) 994-2009	351 TX State Highway 62 # B Buna, TX 77612-6473	100 - 499	Jasper
American Timber & Steel	N/A	Fence-manufacturers	(936) 462-1616	2999 FM 2864 Nacogdoches, TX 75965-8120	100 - 499	Nacogdoches
Angelina County Sheriff	Kent Henson, Manager	Government Offices-county	(936) 634-3331	2311 E Lufkin Ave Lufkin, TX 75901-5129	100 - 499	Angelina
Armstrong Hardwood Products	Larry Branch, Site Manager	Floor Materials	(936) 598-2991	1100 Cotton Ford Rd Center, TX 75935-323	100 - 499	Shelby
ATCO Structures & Logistics	Crystal Berry, Hr Executive	Buildings-portable	(936) 829-2325	1106 N Temple Dr Diboll, TX 75941-1304	100 - 499	Angelina
Atkinson Candy Co	Annette Murphy, Hr Executive	Candy & Confectionery-manufacturers	(936) 639-2333	1608 W Frank Ave Lufkin, TX 75904-3109	100 - 499	Angelina
Best Buy	Jason Jones, Site Manager	EleCenteric Equipment & Supplies-retail	(936) 699-1100	4505 S Medford Dr # 203 Lufkin, TX 75901-5663	100 - 499	Angelina
Bradford At Brookside	Cheryl Scott, Hr Executive	Nursing & Convalescent Homes	(936) 327-4341	301 W Park Livingston, TX 77351-8151	100 - 499	Polk
Bright Coop Inc	Wanda Russell, Hr Executive	Poultry Equipment & Supplies (whls)	(936) 564-8378	803 W Seale St Nacogdoches, TX 75964-5226	100 - 499	Nacogdoches
Brookshire Bros Food/Pharmacy	Patty Spurlock, Director	Grocers-retail	(936) 646-2414	14189 Highway 190 W Onalaska, TX 77360	100 - 499	Polk
Brookshire Brothers Florist	N/A	Florists-retail	(936) 639-3286	N/A	100 - 499	Angelina
Brookshire Brothers Inc	Erin Parker, Hr Executive	Grocers-retail	(936) 634-8155	1201 Ellen Trout Dr Lufkin, TX 75904-1233	100 - 499	Angelina
Brookshire's	Anne Rester, General Mgr	Grocers-retail	(936) 639-3128	1807 W Frank Ave Lufkin, TX 75904-3185	100 - 499	
Buna Independent School District	Robin Perez, Hr Executive	Schools	(409) 994-5101	Texas 62 Buna, TX 77612	100 - 499	Jasper
Buna School Superintendent Office	John E Burt, Manager	Schools	(409) 994-4803	1022 TX State Highway 62 Buna, TX 77612	100 - 499	Jasper
Burmont Nursing Center	Roger Harvil, Administrator	Nursing & Convalescent Homes	(936) 327-5415	1620 Highway 59 Loop N Livingston, TX 77351-9988	100 - 499	Polk
Cafe Del Rio	Letty Vargas, Exec Director	Restaurants	(936) 639-4471	1901 S 1st St Lufkin, TX 75901-5603	100 - 499	Angelina
Cal-Tex Lumber Inc	Jeff Rab, Hr Executive	Sawmills (mfrs)	(936) 564-6426	2912 Rayburn Dr Nacogdoches, TX 75961-7468	100 - 499	Nacogdoches
Castle Pines Heath & Rehab	Jane Dorman, Hr Executive	Rehabilitation Services	(936) 699-2544	2414 W Frank Ave Lufkin, TX 75904-3521	100 - 499	Angelina
Central Heights School District	Jeremy Glenn, Hr Executive	Schools	(936) 564-2681	10317 US Highway 259 Nacogdoches, TX 75965-0815	100 - 499	Nacogdoches
CHI St Luke's Hlth Livingston	Angel Bench, Office Manager	Clinics	(936) 329-8700	1717 Highway 59 Loop N Livingston, TX 77351-5703	100 - 499	Polk
Cho Yeh Camp & Conference Center	Brenda Barlow, Hr Executive	Camps	(936) 328-3200	2200 S Washington Ave Livingston, TX 77351-4098	100 - 499	Polk
CHRISTUS Jasper Memorial Hospital	Kay Powell, Hr Executive	Hospitals	(409) 384-5461	1275 Marvin Hancock Dr Jasper, TX 75951-4995	100 - 499	Jasper
CLW Inc	Zachary Lowe, Hr Executive	Lumber-manufacturers	(281) 592-4691	10001 FM 2025 Rd Cleveland, TX 77328-8334	100 - 499	San Jacinto
Commercial Bank of Texas NA	Patty Shaw, Hr Executive	Banks	(936) 715-4100	215 E Main St Nacogdoches, TX 75961-5223	100 - 499	Nacogdoches
Community Health Systems	William Whiddon, Manager	Health Services	(936) 637-8589	209 Gaslight Blvd Lufkin, TX 75904-313	500 - 999	Angelina
Corrigan Independent School District	Sherry Hughes, Hr Executive	Schools	(936) 398-2717	504 S Home St Corrigan, TX 75939-2624	100 - 499	Polk
Cracker Barrel Old Country Str	N/A	Full-service Restaurant	(936) 699-5020	2302 S 1st St Lufkin, TX 75901-7106	100 - 499	Angelina
Creative Solutions & Health Cr	Joshua Tousha, Administrator	Home Health Service	(936) 564-3771	227 Russell Blvd Nacogdoches, TX 75965-1238	100 - 499	Nacogdoches
Criminal Justice Department	Tony O'Hare, Manager	Government Offices-state	(409) 383-0012	349 Private Road 8430 Jasper, TX 75951-9737	100 - 499	Jasper
Criminal Justice Department	Warden Haynes, Manager	State Government-legal Counsel	(409) 283-8181	777 FM 3497 Woodville, TX 75990-9990	100 - 499	Tyler
Deep East Texas EleCenteric	Larry Warren, Hr Executive	EleCenteric Companies	(936) 275-2314	880 State Highway 21 E San Augustine, TX 75972-2534	100 - 499	San Augustine
Deweyville District Superintendent	Rick Summers, Hr Executive	Schools	(409) 746-2731	712 Texas State Hwy 272 Deweyville, TX 77614	100 - 499	Newton
Deweyville Independent School	Brenda Wofford, Hr Executive	Schools	(409) 746-3309	713 Texas State Hwy 272 Deweyville, TX 77614	100 - 499	Newton
Diboll Correctional Center	Valerie Montgomery, Hr Executive	Training Programs & Services	(936) 829-2295	1604 S 1st St Diboll, TX 75941-9699	100 - 499	Angelina

EMPLOYERS	CONTACT	DESCRIPTION	PHONE	ADDRESS	# OF EMPLOYEES:	COUNTY
East Texas Support Svc	Bruce Brodnax, Administrator	Human Services Organizations	(409) 384-9006	109 W Water St Jasper, TX 75951-4423	100 - 499	Jasper
Eastham State Prison	C Bell, Manager	Government Offices-state	(936) 636-7321	2665 Prison Road 1 Lovelady, TX 75851-5609	500 - 999	Houston
Eaton Cooper Power Systems Inc	Bj Pitts, Hr Executive	Power Distr/specialty Transformer (mfrs)	(936) 569-9422	2315 SE Stallings Dr Nacogdoches, TX 75961-6808	100 - 499	Nacogdoches
Escapes Inc	Cathy Carr, President	Mailing & Shipping Services	(936) 327-2870	101 Rainbow Dr Livingston, TX 77399-9330	100 - 499	Polk
Etech Inc	Ray Levitzki, General Mgr	Telecommunications Services	(936) 633-9200	106 N John Redditt Dr Lufkin, TX 75904-2640	100 - 499	Angelina
Few Primary School	Vanessa Phillips, Principal	Schools	(409) 489-9808	225 Bulldog Ave Jasper, TX 75951-4951	100 - 499	Jasper
Floor Care & Interior LLC	Cynthia Sisk, General Mgr	Carpet & Rug Cleaners	(936) 646-3048	14310 Highway 190 W Onalaska, TX 77360	100 - 499	Polk
Foretravel Inc	Gary Whitsett, CMO	Mobile Homes-manufacturers	(936) 564-8367	1221 NW Stallings Dr Nacogdoches, TX 75964-3059	100 - 499	Nacogdoches
Foretravel of Texas Inc	Lyle Reed, Exec Director	Recreational Vehicles & Campers-mfrs	(936) 564-8367	811 NW Stallings Dr Nacogdoches, TX 75964-3851	100 - 499	Nacogdoches
Game Exchange	Drew Wilman, Manager	Video Games-supplies & Parts	(936) 639-4263	4505 S Medford Dr # 311 Lufkin, TX 75901-5664	100 - 499	Angelina
Garrison Independent School District	Carol Stanaland, Hr Executive	Schools	(936) 347-7000	459 N US Highway 59 Garrison, TX 75946-2117	100 - 499	Nacogdoches
General Shelters of Texas Ltd	Retha Starkey, Manager	Buildings-pre-cut Prefab & Modlr-mfrs	(936) 598-3389	1639 State Highway 87 N Center, TX 75935-5657	100 - 499	Shelby
Georgia-Pacific Corp	Jim Rush, Vice President	Timber & Timberland Companies (whls)	(936) 829-5511	303 S Temple Dr Diboll, TX 75941-2419	500 - 999	Angelina
Georgia-Pacific Corp	Tom Tyrrell, Hr Executive	Paper-manufacturers	(936) 398-2511	20125 E FM 942 Corrigan, TX 75939	500 - 999	Polk
Georgia-Pacific Corp	Ann Lemmond, Hr Executive	Plywood & Veneers-manufacturers	(936) 398-2521	800 Industrial Rd Corrigan, TX 75939-2204	100 - 499	Polk
Georgia-Pacific Corp	Dot Saari, Hr Executive	Lumber-manufacturers	(409) 994-5911	Highway 96 Buna, TX 77612	100 - 499	Jasper
Georgia-Pacific Corp	Johnnie Ross, Hr Executive	Timber & Timberland Companies (whls)	(409) 584-4200	105 Yellow Pine Hwy Pineland, TX 75968	100 - 499	Sabine
Groveton Central Admin	Don Hamilton, Manager	Schools	(936) 642-1473	207 N Main St Groveton, TX 75845	100 - 499	Trinity
Groveton Elementary School	Joe Driskell, Administrator	Schools	(936) 642-1182	208 N Main St Groveton, TX 75845	100 - 499	Trinity
Hemphill High School	Sally Butler, Hr Executive	Schools	(409) 787-3371	1000 Milam St Hemphill, TX 75948-9856	100 - 499	Sabine
Hudson Independent School	Leanne Castlaw, Hr Executive	Schools	(936) 875-9292	6735 Ted Trout Dr Lufkin, TX 75904-6641	100 - 499	Angelina
International Paper Co	N/A	Paper-manufacturers	(936) 829-4436	Camden, TX 75934	100 - 499	Polk
International Paper Co	N/A	Paper-manufacturers	(936) 398-2511	20125 E FM 942 Corrigan, TX 75939	100 - 499	Polk
International Paper Co	Alan Jones, Manager	Paper-manufacturers	(409) 584-4227	105 Yellow Pine Hwy Pineland, TX 75968	100 - 499	Sabine
International Paper Co	Ed Taylor, Manager	Paper-manufacturers	(936) 829-4433	N/A	100 - 499	Angelina
Jasper-Newton EleCenteric Co-Op	Joey Davis, Hr Executive	EleCenteric Companies	(936) 269-3127	10901 US Highway 84 E Joaquin, TX 75954	100 - 499	Shelby
Junior League of Lufkin	Tara Watkins, Hr Executive	Non-profit Organizations	(936) 676-5989	503 N 2nd St Lufkin, TX 75901-3013	100 - 499	Angelina
Larkspur Center	Becky Jerke, Exec Director	Nursing & Convalescent Homes	(936) 632-8223	201 S John Redditt Dr Lufkin, TX 75904-3142	100 - 499	Angelina
Livingston High School	Barbara Shaw, Hr Executive	Schools	(936) 328-2296	400 FM 350 S Livingston, TX 77351-9447	100 - 499	Polk
Livingston Junior High School	Michael Woodard, Principal	Schools	(936) 328-2120	1801 Highway 59 Loop N Livingston, TX 77351-5701	100 - 499	Polk
Local Net	N/A	Internet Service	(409) 384-5778	Jasper, TX 75951	100 - 499	Jasper
Lockheed Martin M&Fc	T J Colwell, Hr Executive	Aerospace Industries (mfrs)	(936) 633-4800	1008 N John Redditt Dr Lufkin, TX 75904-2628	100 - 499	Angelina
Louisiana-Pacific Corp	Phil Lasswell, Hr Executive	Building Materials	(409) 489-0017	5110 US Highway 190 E Jasper, TX 75951-6710	100 - 499	Jasper
Lowe's Home Improvement	Candace Hardman, Hr Executive	Home Centers	(936) 560-7100	220 N Stallings Dr Nacogdoches, TX 75965-0701	100 - 499	Nacogdoches
Lowe's Home Improvement	Chantel Wideman, Hr Executive	Home Centers	(936) 632-8333	3501 S Medford Dr Lufkin, TX 75901-5781	100 - 499	Angelina
Lowe's Home Improvement	Kim Gauthier, Hr Executive	Home Centers	(936) 329-0300	120 Highway 59 Loop S Livingston, TX 77351-9034	100 - 499	Polk
Lowe's Home Improvement	Robert Berry, Site Manager	Home Centers	(409) 383-6320	900 W Gibson St Jasper, TX 75951-4889	100 - 499	Jasper



EMPLOYERS	CONTACT	DESCRIPTION	PHONE	ADDRESS	# OF EMPLOYEES:	COUNTY
Lufkin City Hall	Paul Parker, Director	Government Offices-city, Village & Twp	(936) 634-8881	300 E Shepherd Ave Lufkin, TX 75901-3252	100 - 499	Angelina
Lufkin Civil Svc Director	Rodney Ivy, Director	Government Offices-city, Village & Twp	(936) 633-0229	300 E Shepherd Ave Lufkin, TX 75901-3252	100 - 499	Angelina
Lufkin Foundry	Steve Reynolds, Manager	Oil Field Equipment-manufacturers	(936) 637-5813	300 Winston 8 Ranch Rd Lufkin, TX 75904	100 - 499	Angelina
Lufkin High School	Linda Latimer, Hr Executive	Schools	(936) 632-7721	309 S Medford Dr Lufkin, TX 75901-5245	100 - 499	Angelina
Lufkin Industries Inc	Jay F Glick, Vice President	Gears & Gear Cutting (mfrs)	(936) 634-2211	407 Kiln St Lufkin, TX 75904-3854	500 - 999	Angelina
Lufkin Industries Inc	Paul Perez, Hr Executive	Oil Well Equipment & Supplies-whls	(936) 634-2211	69 S Farm Rd 326 Lufkin, TX 75901	100 - 499	Angelina
Lufkin Middle School	Gail Krause, Hr Executive	Schools	(936) 630-4444	900 E Denman Ave Lufkin, TX 75901-4830	100 - 499	Angelina
Lufkin Skilled Care	Julie Barnett, Hr Executive	Nursing & Convalescent Homes	(936) 632-3311	504 N John Redditt Dr Lufkin, TX 75904-2644	100 - 499	Angelina
Lufkin State Supported Living	Sandra Farr, Hr Executive	Assisted Living Facility Consultants	(936) 634-3353	6844 N US Highway 69 Pollok, TX 75969-4548	500 - 999	Angelina
Memorial Health Sys-East Tx	N/A	Hospitals	(936) 632-1000	202 S Bynum St Lufkin, TX 75904-3913	100 - 499	Angelina
Memorial Hospital	Les Leach, Administrator	Long Term Care Facility	(936) 639-7975	1201 W Frank Ave Lufkin, TX 75904-3357	100 - 499	Angelina
Nacogdoches High School	Nathan Shaddock, Principal	Schools	(936) 462-1403	4310 Appleby Sand Rd Nacogdoches, TX 75965-2299	100 - 499	Nacogdoches
Nacogdoc Cty Law Enforce Center	Jason Bridges, Manager	County Govt-correctional Institutions	(936) 560-7790	2306 Douglass Rd Nacogdoches, TX 75964-3825	100 - 499	Nacogdoches
Nacogdoches County Hospital District	N/A	Hospitals	(936) 564-1895	1204 N Mound St Nacogdoches, TX 75961-4027	100 - 499	Nacogdoches
Nacogdoches County Sheriff	Jason Bridges, Manager	Government Offices-county	(936) 560-7777	2306 Douglass Rd Nacogdoches, TX 75964-3825	100 - 499	Nacogdoches
Nacogdoches Medical Center	Teresa Farrell, Hr Executive	Hospitals	(936) 569-9481	4920 NE Stallings Dr Nacogdoches, TX 75965-1254	500 - 999	Nacogdoches
Nacogdoches Memorial Hospital	Missy Thomas, Hr Executive	Hospitals	(936) 564-4611	1204 N Mound St Nacogdoches, TX 75961-4061	500 - 999	Nacogdoches
Naranjo & Naranjo	J Neal Naranjo, Owner	Psychotherapists	(936) 634-7979	103 Carriage Dr # C Lufkin, TX 75904-0880	100 - 499	Angelina
NIBCO Inc	Don Mulbach, Hr Executive	Plumbing Fixture Fittings & Trim (mfrs)	(936) 564-8321	723 S Fredonia St Nacogdoches, TX 75961-5555	100 - 499	Nacogdoches
Nirow Inc	James Nichols, Owner	Tree Trimming	(936) 829-5100	203 N Temple Dr Diboll, TX 75941-1701	100 - 499	Angelina
Norbord	Angela Edwards, Hr Executive	Paper-manufacturers	(936) 687-4665	2301 SE Stallings Dr Nacogdoches, TX 75961-6873	100 - 499	Nacogdoches
Nucor Vulcraft Group	Rhonda Wuerch, Hr Executive	Steel Products (whls)	(936) 687-4665	175 County Road 2345 Grapeland, TX 75844-5886	100 - 499	Houston
Oceans Behavioral Hospital	Karen Parker, Administrator	Mental Health Services	(972) 464-0022	302 Gobblers Knob Rd Lufkin, TX 75904-5419	100 - 499	Angelina
Onalaska Elementary School	Angela Foster, Hr Executive	Schools	(936) 646-1050	304 S FM 356 Onalaska, TX 77360	100 - 499	Polk
Onalaska Independent School District	Lynn Redden, Administrator	Schools	(936) 646-1002	Onalaska, TX 77360	100 - 499	Polk
Parker Engineered Polymer System	Barbara Rodgers, Manager	Seals-o-ring-manufacturers	(936) 560-1742	403 Industrial Dr Nacogdoches, TX 75964-1297	100 - 499	Nacogdoches
Parkwood Place Beauty Salon	Frances Bone, Manager	Beauty Salons	(936) 632-4648	309 N Bynum St Lufkin, TX 75904-2731	100 - 499	Angelina
Parkwood Place Healthcare Center	Steven Gularte, CEO	Nursing & Convalescent Homes	(936) 637-7215	300 N Bynum St Lufkin, TX 75904-2707	100 - 499	Angelina
Pilgrim's Pride Corp	Kay Brock, Hr Executive	Poultry Processing Plants (mfrs)	(936) 639-5412	1710 W Frank Ave Lufkin, TX 75904-3106	500 - 999	Angelina
Pilgrim's Pride Corp	Kay Brock, Hr Executive	Poultry Processing Plants (mfrs)	(936) 639-5412	1800 W Frank Ave Lufkin, TX 75904-3100	500 - 999	Angelina
Pilgrim's Pride Corp	Kim Lloyd, Hr Executive	Poultry Processing Plants (mfrs)	(936) 564-6145	928 Martin Luther King Jr Blvd Nacogdoches, TX 75961-6000	500 - 999	Nacogdoches
Pilgrim's Pride Corp	N/A	Poultry Processing Plants (mfrs)	(936) 560-3901	3412 Rayburn Dr Nacogdoches, TX 75961-7723	100 - 499	Nacogdoches
Pilgrims Pridechicken Grow-Out	David Keith, Manager	Poultry Processing Plants (mfrs)	(936) 639-1174	1710 W Frank Ave Lufkin, TX 75904-3106	500 - 999	Angelina
Pine Grove Nursing Center	Kerrie Hooper, Hr Executive	Rehabilitation Services	(936) 598-6286	246 Haley Dr Center, TX 75935-9798	100 - 499	Shelby
Pine Ridge Elementary	Janel Sewell, Hr Executive	Schools	(936) 328-2160	1200 Mill Rdg Livingston, TX 77351-3050	100 - 499	Polk
Pine Ridge Health Care LLP	Hillary Zeigler, Hr Executive	Nursing & Convalescent Homes	(936) 327-5415	1620 Highway 59 Loop N Livingston, TX 77351-9988	100 - 499	Polk
Pinecrest Retirement Community	Amy Thomas, Exec Director	Retirement Communities & Homes	(936) 634-1054	1302 Tom Temple Dr Lufkin, TX 75904-5548	100 - 499	Angelina

EMPLOYERS	CONTACT	DESCRIPTION	PHONE	ADDRESS	# OF EMPLOYEES:	COUNTY
Port-A-Cool	Ernesto Guillen, Hr Executive	Manufacturers	(936) 598-6353	721 FM 2468 Center, TX 75935-7234	100 - 499	Shelby
Posados	Cita Willigan, General Mgr	Restaurants	(936) 560-2940	1315 North St Nacogdoches, TX 75961-4036	100 - 499	Nacogdoches
Quad/Graphics Inc	Blake Weiss, Director	Printers (mfrs)	(936) 634-3357	3001 Atkinson Dr Lufkin, TX 75901-1525	100 - 499	Angelina
R R Donnelley	Cathy Williams, Hr Executive	Printers (mfrs)	(936) 564-0600	5903 North St Nacogdoches, TX 75965-1323	100 - 499	Nacogdoches
Rayburn Country Assn	Kim Schroer, Hr Executive	Hotels & Motels	(409) 698-1000	2376 Wingate Blvd Brookeland, TX 75931-7265	500 - 999	Jasper
Sabine County Hospital District	N/A	Hospitals	(409) 787-2231	2025 Worth St Hemphill, TX 75948-7218	100 - 499	Sabine
Sabine County Hospital District	N/A	Hospitals	(409) 584-3916	2058 Longleaf St Pineland, TX 75968	100 - 499	Sabine
Sam Houston EleCenteric Co-Op Inc	Theresa Langston, Hr Executive	EleCenteric Companies	(936) 327-5711	1157 E Church St Livingston, TX 77351-3360	100 - 499	Polk
Sand HILL Foundation LLC	Delicia Eaves, Owner	Logging Companies (mfrs)	(936) 591-9000	214 County Road 1005 Center, TX 75935-6078	100 - 499	Shelby
School District	Bonnie Hooper, Hr Executive	Schools	(936) 687-4619	116 W Myrtle St Grapeland, TX 75844	100 - 499	Houston
Shelbyville School District	Jill Baty, Hr Executive	Schools	(936) 598-2641	343 FM 417 E Shelbyville, TX 75973-1705	100 - 499	Shelby
Slack Elementary School	Gail Rice, Hr Executive	Schools	(936) 639-2279	1305 Fuller Springs Dr Lufkin, TX 75901-6515	100 - 499	Angelina
Southeast Texas Industries Group	Terri Freeman, Hr Executive	Sheet Metal Work Contractors	(409) 994-3570	35911 US Highway 96 S Buna, TX 77612-4031	100 - 499	Jasper
SPJST Lodge	N/A	Fraternal Organizations	(936) 637-2706	197 Hughes Rd Lufkin, TX 75901	100 - 499	Angelina
Stallings Court Nurse & Rehab	Samantha Milstead, Administrator	Elderly Companion Service	(936) 569-5600	4616 NE Stallings Dr Nacogdoches, TX 75965-1608	100 - 499	Nacogdoches
Stephen F Austin State University	Baker Patillo, President	Schools-universities & Colleges Academic	(936) 468-1110	2102 Alumni Dr Nacogdoches, TX 75961	500 - 999	Nacogdoches
Stephen F Austin State University	Glenda Herrington, Hr Executive	Schools-universities & Colleges Academic	(936) 468-2011	1936 North St Nacogdoches, TX 75965-3940	500 - 999	Nacogdoches
Target	Brian Knapp, Hr Executive	Department Stores	(936) 637-3000	4200 S Medford Dr Lufkin, TX 75901-5611	100 - 499	Angelina
Texas Department Transportation	Dennis Cooley, Manager	Government-job Training/voc Rehab Svcs	(936) 633-4375	1805 N Timberland Dr Lufkin, TX 75901-2337	100 - 499	Angelina
Texas Department Criminal Justice	Janie Cockrell, Manager	Government Offices-state	(936) 829-2616	1502 S 1st St Diboll, TX 75941-9668	100 - 499	Angelina
Texas Farm Products Co	Connie Bishop, Hr Executive	Feed-manufacturers	(936) 5643711	915 S Fredonia St Nacogdoches, TX 75964-5913	100 - 499	Nacogdoches
Timber Creek Elementary School	Kyle Rice, Hr Executive	Schools	(936) 328-2180	701 N Willis Ave Livingston, TX 77351-2661	100 - 499	Polk
Timberwood Nursing & Rehab Center	Renella Johnson, Hr Executive	Rehabilitation Services	(936) 327-4446	4001 U S Highway 59 N Livingston, TX 77351-4663	100 - 499	Polk
Timpson Independent School District	Sherri Strahan, Hr Executive	Schools	(936) 254-2463	836 Bear Dr Timpson, TX 75975-4128	100 - 499	Shelby
Transportation Department	Jeanette Herndon, Hr Executive	Government Offices-state	(936) 634-4433	1805 N Timberland Dr Lufkin, TX 75901-2337	100 - 499	Angelina
Treecon Resources Inc	Josh Lowe, CEO	Forestry & Timber Equip & Supls (whls)	(936) 634-3365	6004 S First St Lufkin, TX 75901-8558	100 - 499	Angelina
Tyler County Hospital	Jan Smith, Hr Executive	Hospitals	(409) 283-8141	1100 W Bluff St Woodville, TX 75979-4799	100 - 499	Tyler
Tyson Foods Inc	Jerry Powell, Hr Executive	Poultry Processing Plants (mfrs)	(936) 598-2723	1019 Shelbyville St Center, TX 75935-3741	500 - 999	Shelby
Tyson Foods Inc	N/A	Meat-wholesale	(936) 248-3000	413 S Center St Tenaha, TX 75974	100 - 499	Shelby
Tyson Foods Inc	Jerry Robison, Hr Executive	Poultry Processing Plants (mfrs)	(936) 569-7967	224 South St Nacogdoches, TX 75961	100 - 499	Nacogdoches
US Post Office	Rob Austin, Manager	Post Offices	(936) 634-7749	800 S John Redditt Dr Lufkin, TX 75904-4300	100 - 499	Angelina
Viking Specialized Trailers	Charles Bright, President	Recreational Vehicles	(936) 564-8370	803 W Seale St # 100 Nacogdoches, TX 75964-5226	100 - 499	Nacogdoches
Walmart Supercenter	Robbie Jenkins, Hr Executive	Department Stores	(936) 639-9600	2500 Daniel McCall Dr Lufkin, TX 75904-7142	500 - 999	Angelina
Walmart Supercenter	Amy Arrant, Hr Executive	Department Stores	(409) 384-1707	800 W Gibson St Jasper, TX 75951-4914	100 - 499	Jasper
Walmart Supercenter	Barbara Seal, Hr Executive	Department Stores	(936) 598-6131	810 Hurst St Center, TX 75935-3417	100 - 499	Shelby
Walmart Supercenter	Brenda Curry, Hr Executive	Department Stores	(936) 544-5121	1225 E Loop 304 Crockett, TX 75835-1807	100 - 499	Houston
Walmart Supercenter	Donna Cox, Hr Executive	Department Stores	(409) 283-8248	115 Cobb Mill Rd Woodville, TX 75979-5537	100 - 499	Tyler

EMPLOYERS	CONTACT	DESCRIPTION	PHONE	ADDRESS	# OF EMPLOYEES:	COUNTY
Walmart Supercenter	Terri Miller, Hr Executive	Department Stores	(936) 327-6370	1620 W Church St Livingston, TX 77351-9008	100 - 499	Polk
Walmart Supercenter	Theresa Hartsfield, Hr Executive	Department Stores	(936) 560-6969	4810 North St Nacogdoches, TX 75965-1876	100 - 499	Nacogdoches
West Rock	Bill Myer, Hr Executive	Packaging Materials-manufacturers	(409) 276-1411	Highway 105 Evadale, TX 77615	500 - 999	Jasper
Whispering Pines Golf Club	Sharon Melton, Hr Executive	Golf Courses	(936) 594-4711	1532 Whispering Pines Dr Trinity, TX 75862-7100	100 - 499	Trinity
Willowbrook	Dee Coronada, Hr Executive	Rehabilitation Services	(936) 564-4596	227 Russell Blvd Nacogdoches, TX 75965-1238	100 - 499	Nacogdoches
Woden Elementary School	Jennifer Hornbuckle, Hr Executive	Schools	(936) 564-2386	5263 FM Rd 226 Woden, TX 75978	100 - 499	Nacogdoches
Woden High School	Linda Mason, Hr Executive	Schools	(936) 564-7903	5263 FM 226 Nacogdoches, TX 75961-7238	100 - 499	Nacogdoches
Woden Independent School District	Jennifer Hornbuckle, Hr Executive	Schools	(936) 564-7903	5263 FM 226 Nacogdoches, TX 75961-7238	100 - 499	Nacogdoches
Woodland Heights Inpatient	Christie Pope, Manager	Hospitals	(936) 637-8523	505 N John Redditt Dr Lufkin, TX 75904	100 - 499	Angelina
Woodland Heights Medical Center	Sally Mc Kenney, Hr Executive	Hospitals	(936) 634-8311	505 S John Redditt Dr Lufkin, TX 75904-3157	500 - 999	Angelina
Woodland Park	Michelle Parks, Hr Executive	Nursing & Convalescent Homes	(936) 628-3388	101 Woodland Park Dr Shepherd, TX 77371-6497	100 - 499	San Jacinto
Woodville Independent School District	Glen Conner, Manager	School Districts	(409) 283-3752	505 N Charlton St Woodville, TX 75979-4535	100 - 499	Tyler

Source: Texas Industry Profiles, Texas Workforce 2016

## *Transit Needs Index*

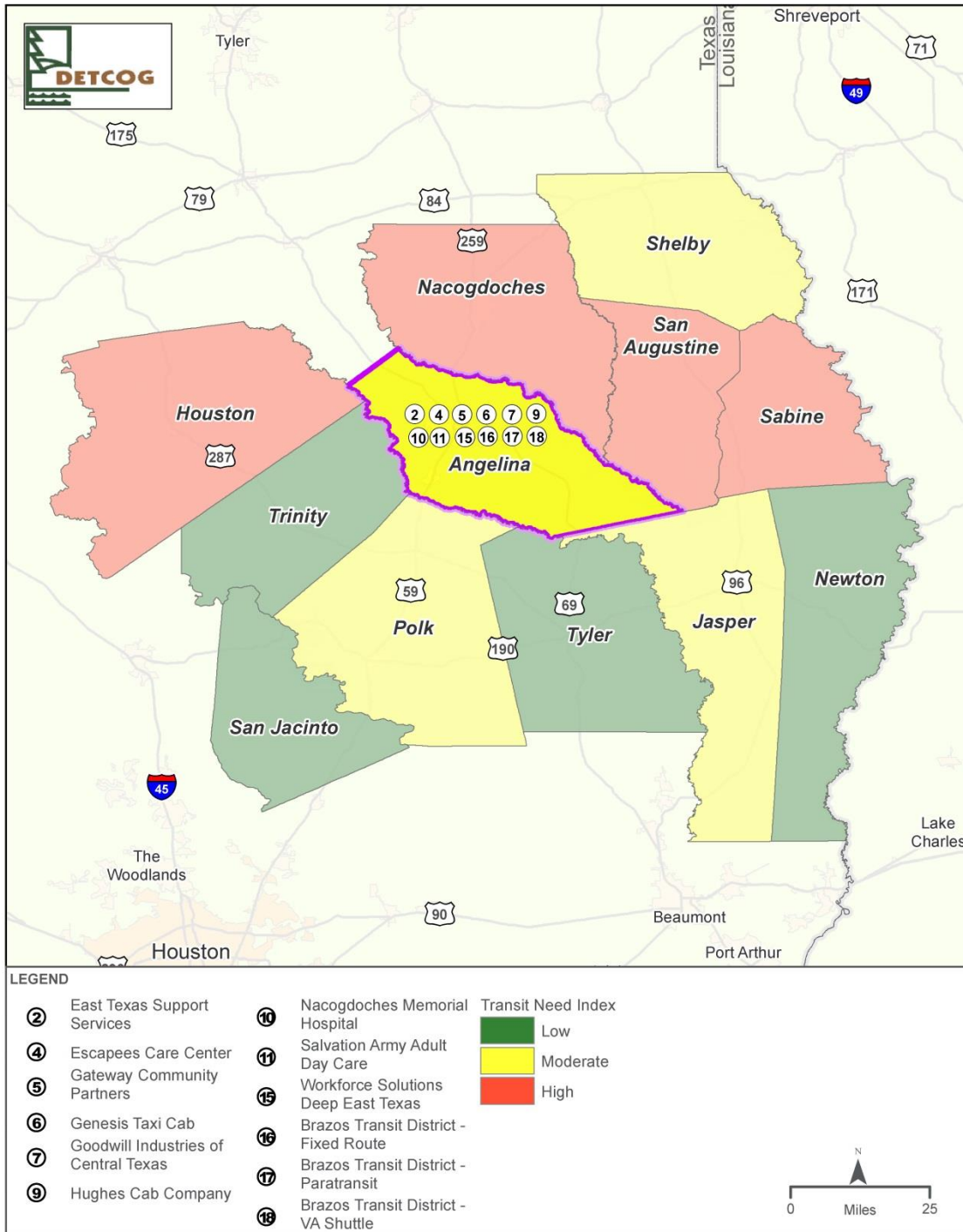
A Transit Needs Index or TNI typically looks at five distinct demographic categories in its methodology. Those categories are youth, elderly/disabled, minority, low car households (one vehicle or less), and poverty. Each category was classified into five sections using the standard GIS Natural Breaks method. One point was given using the Natural Breaks method.

Socioeconomic and demographic characteristics describe traveler's characteristics and both may influence the mode of transportation taken for various trip purposes. Origin based transit dependency or potential transit need may be described as a function of demographics and socioeconomics variables.

Of particular note in this 12-county region are the transit needs of the category of elderly/disabled. The elderly population of the region averages 30% higher than the state as a whole. When you combine the elderly (**Table III-5, Page 25**) with disabled (**Table III-6, Page 25**) their percentage of the population ranges from 43% in Angelina County to 66% of Tyler County. Both groups face many of the same issues related to their poverty (Low income restricting ability to pay for individual focused transit services) and physical ability (Accessing route transit services, Stamina to wait up to 4 hours for return Demand/Response or Paratransit services) that contribute to their particular set of transit needs.

A transit needs index (TNI) was created for the 12 county DETCOG region. The transit need index for the DETCOG region consisted of five distinct demographic categories in its methodology. These categories include youth (those under the age of 16), elderly population (65 and older), minority, low car households (one vehicle or less) and poverty. The characteristics were examined within each of the counties in the 12-County region. The resulting data was further refined by indexing to a reference value established within the study area. One point was given to the lowest percentage and five points were given for the highest percentage for each respective demographic category. The aggregate of all five categories is the overall transit needs score. The transit need scores were then divided into three categories (low, medium, high. **Figure III-2 through Figure III-13** show the transit needs in each county.

Figure III-2 Transit Needs Index: Angelina County

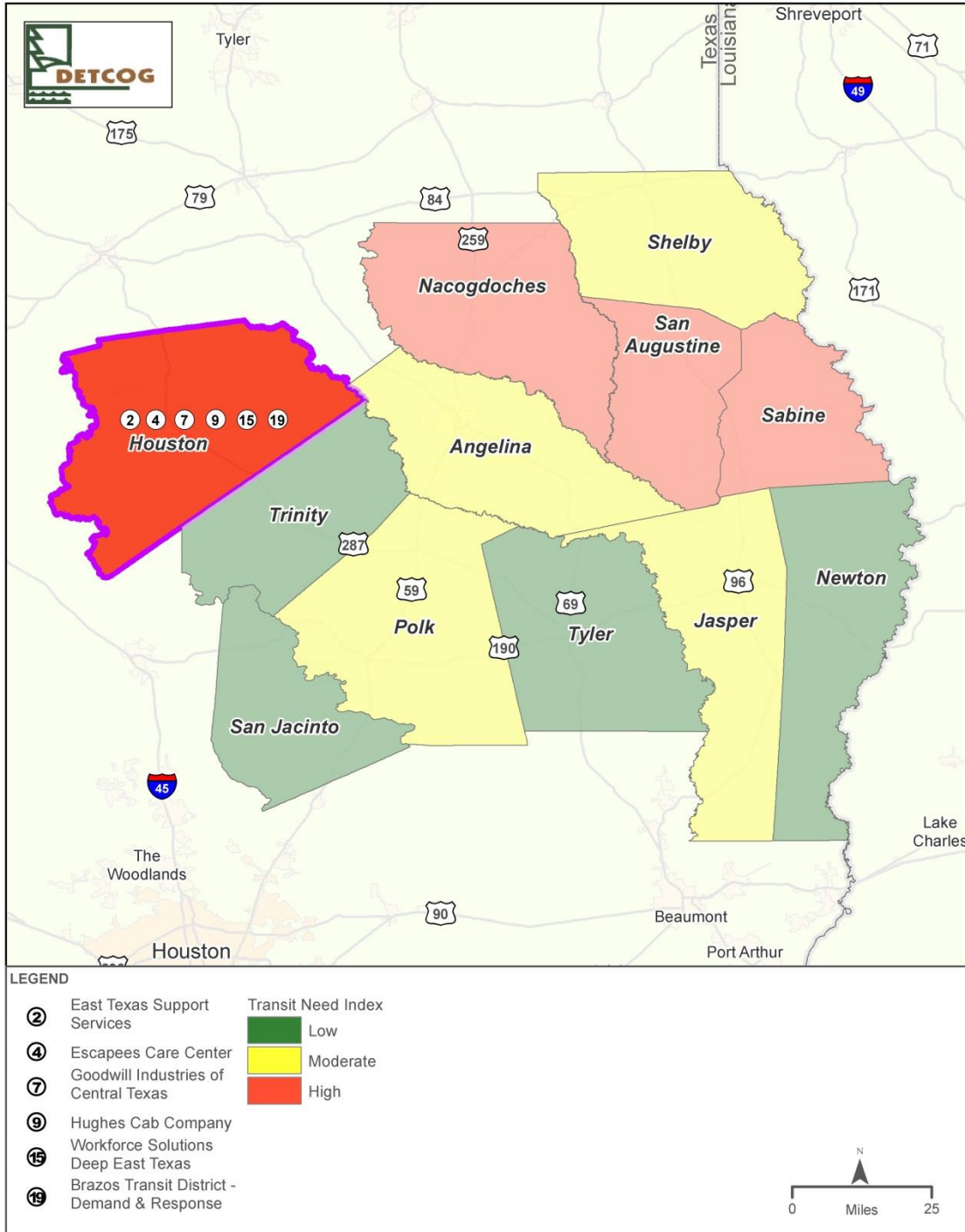


**TRANSIT NEED - ANGELINA COUNTY**





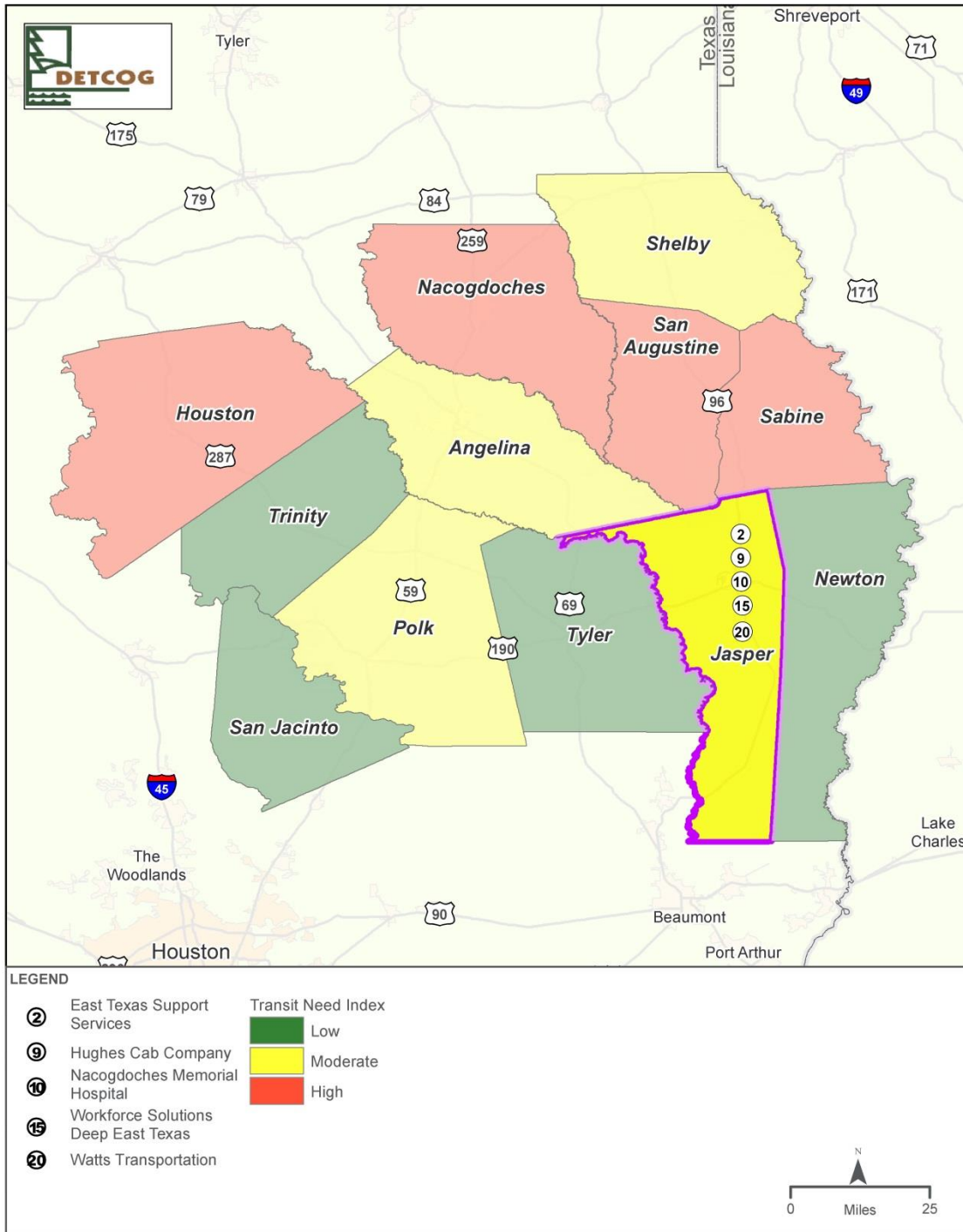
Figure III-3 Transit Needs Index: Houston County



**TRANSIT NEED - HOUSTON COUNTY**



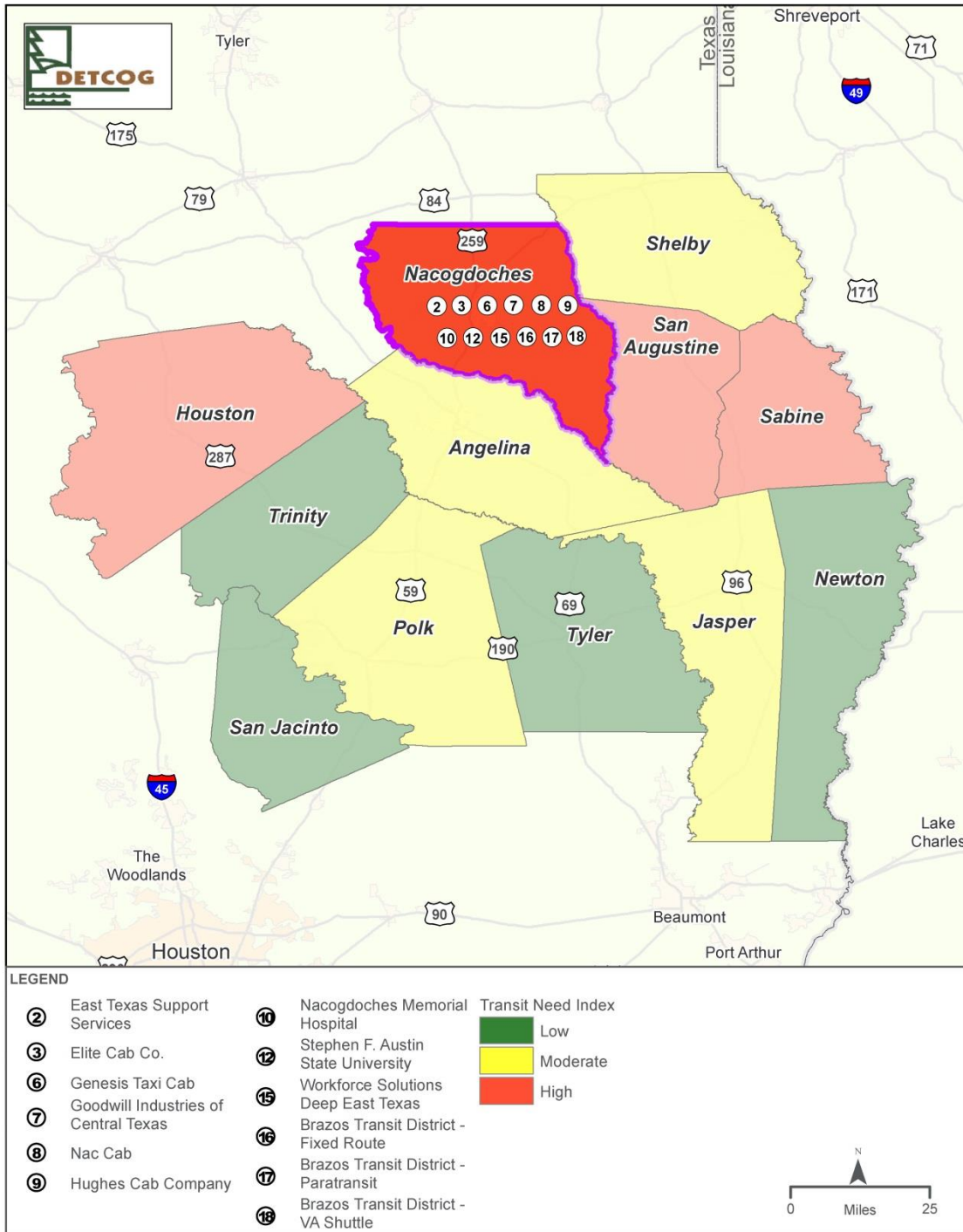
Figure III-4 Transit Needs Index: Jasper County



**TRANSIT NEED - JASPER COUNTY**



Figure III-5 Transit Needs Index: Nacogdoches County

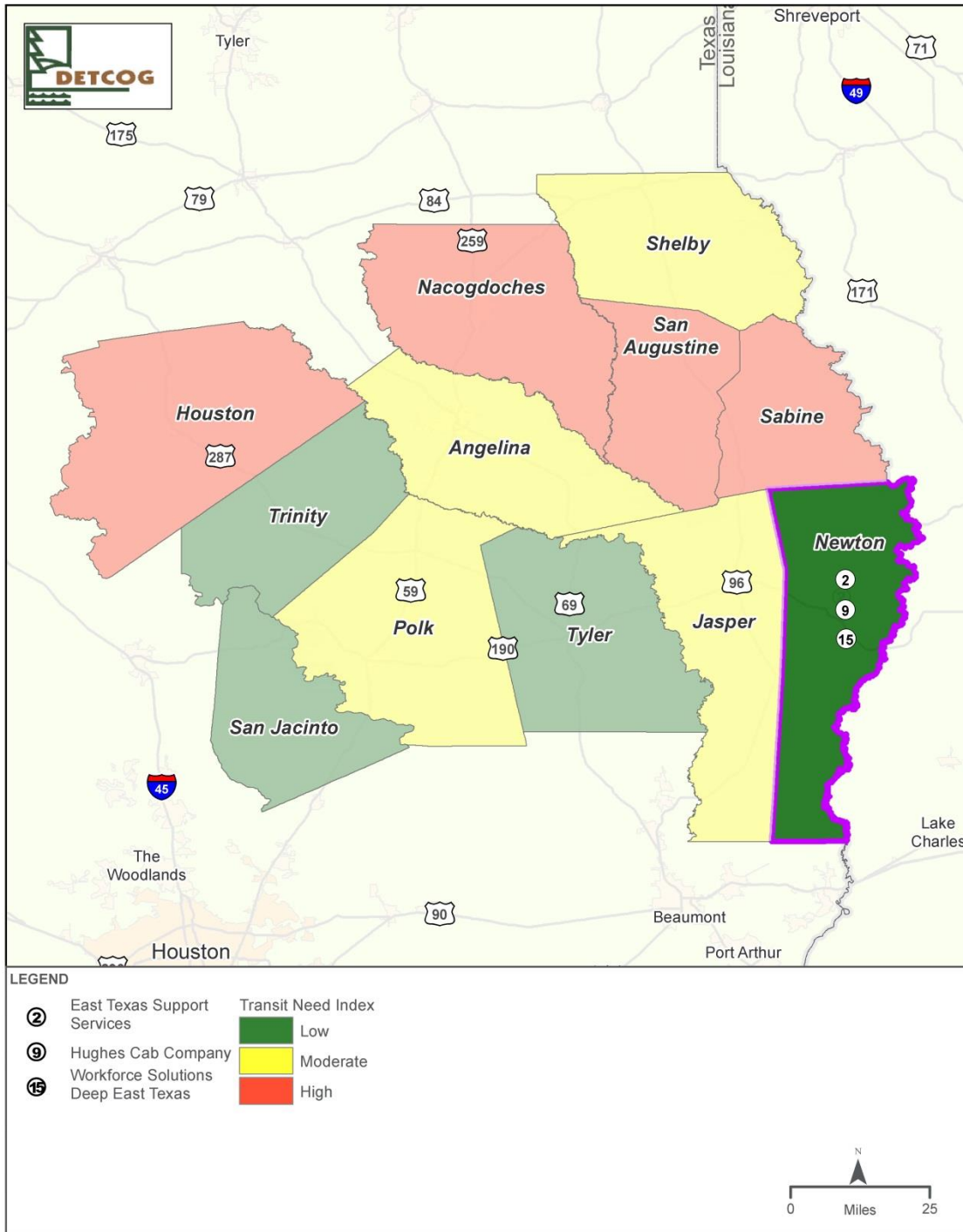


**TRANSIT NEED - NACOGDOCHES COUNTY**





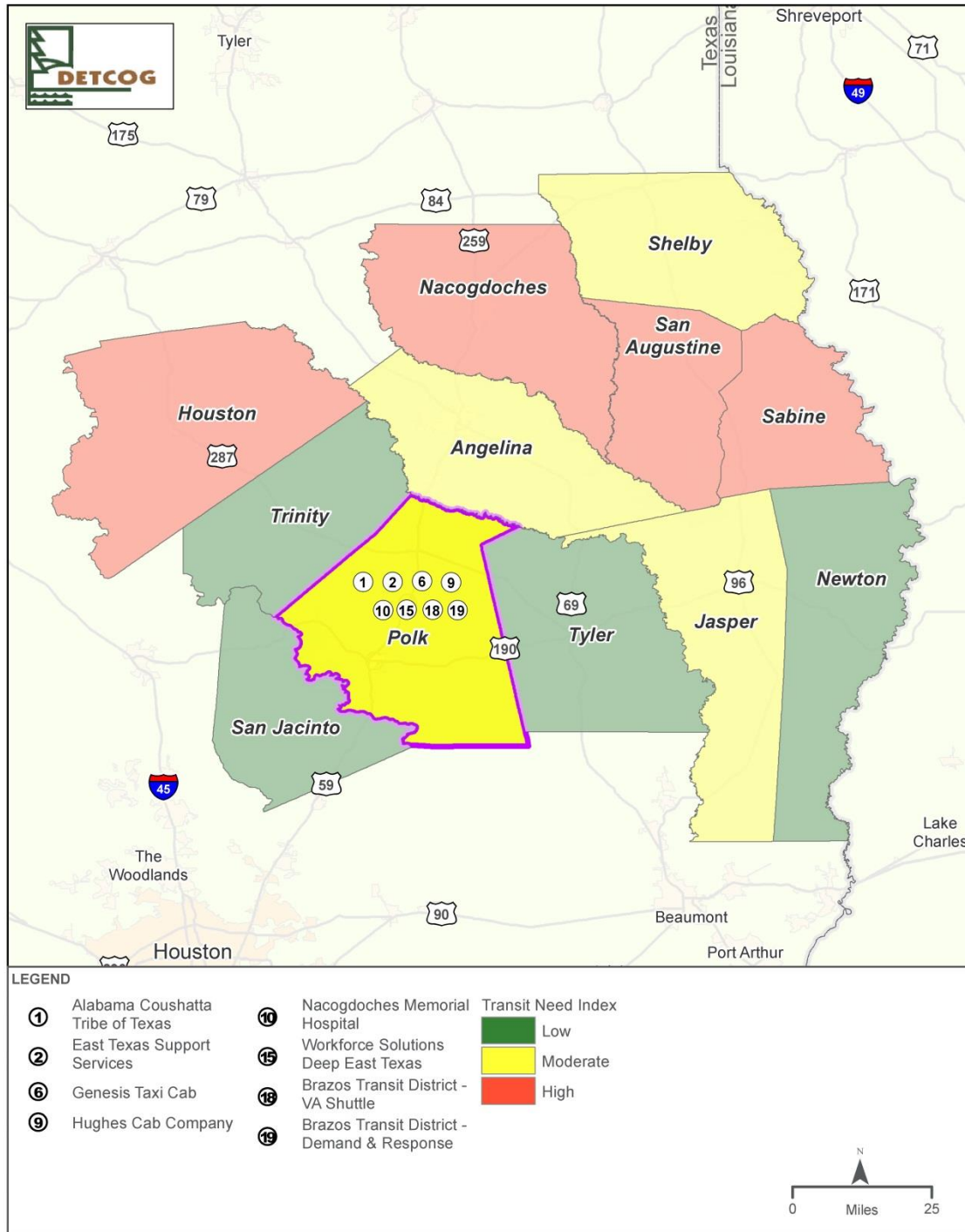
Figure III-6 Transit Needs Index: Newton County



**TRANSIT NEED - NEWTON COUNTY**



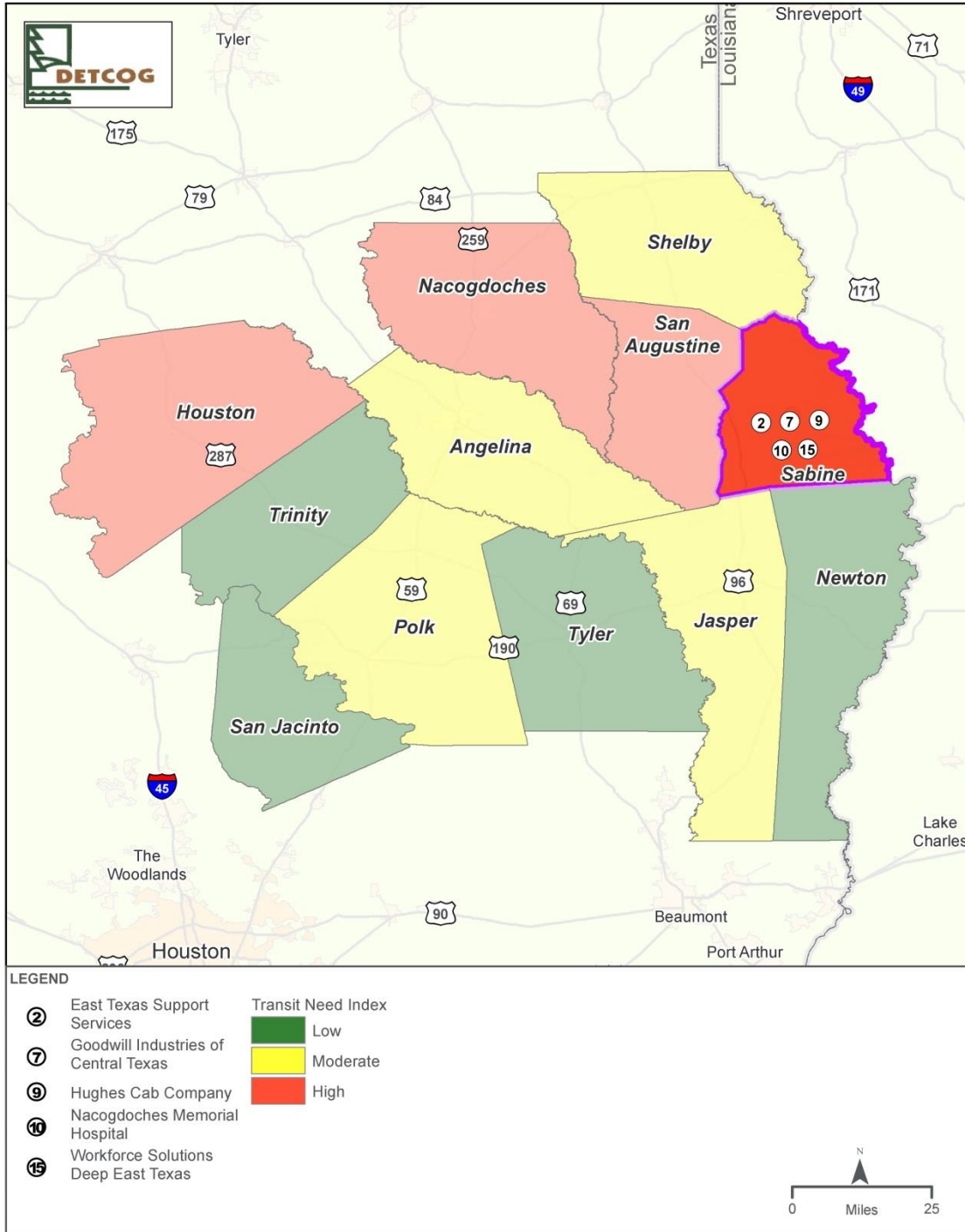
Figure III-7 Transit Needs Index: Polk County



**TRANSIT NEED - POLK COUNTY**



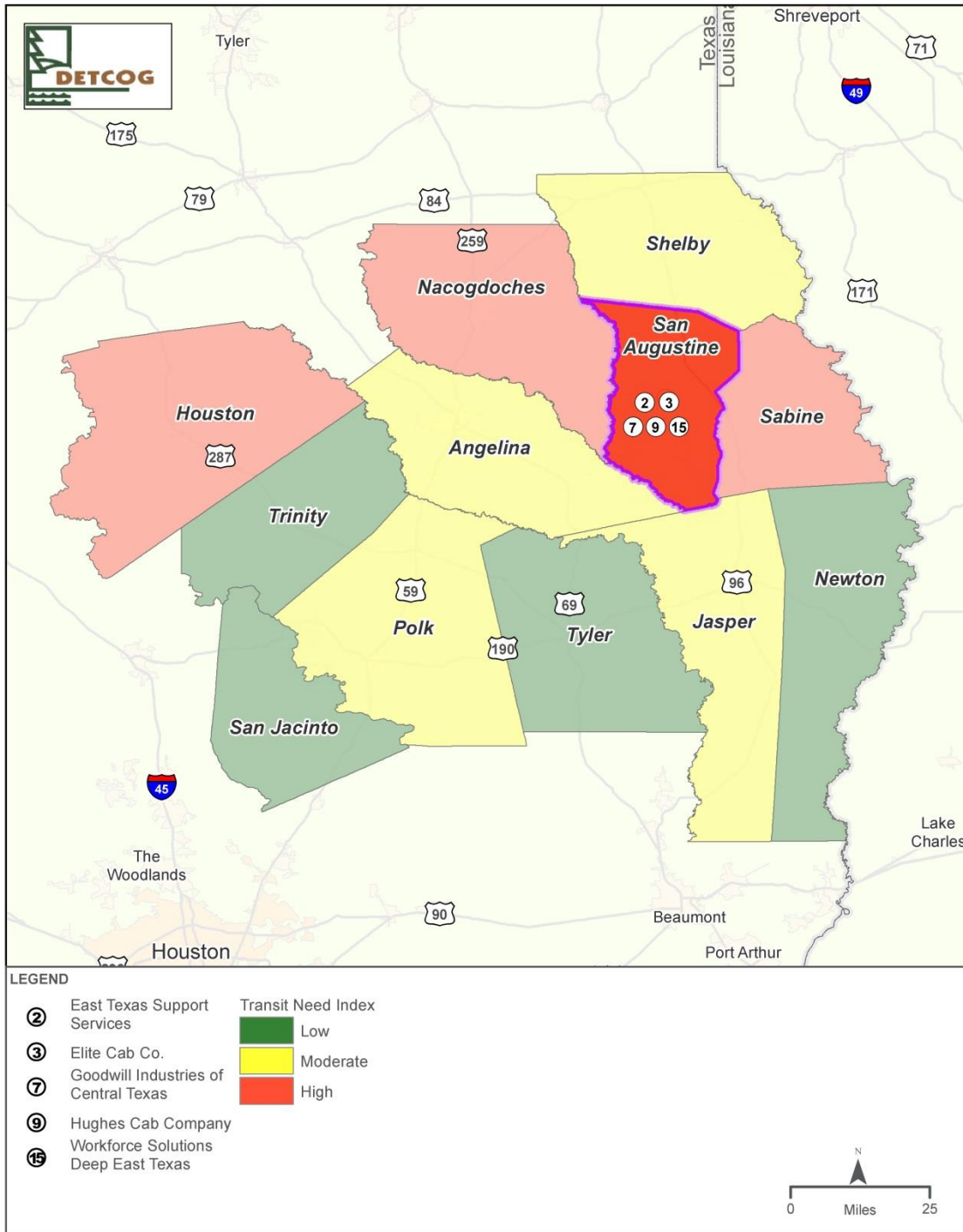
Figure III-8 Transit Needs Index: Sabine County



**TRANSIT NEED - SABINE COUNTY**



Figure III-9 Transit Needs Index: San Augustine County

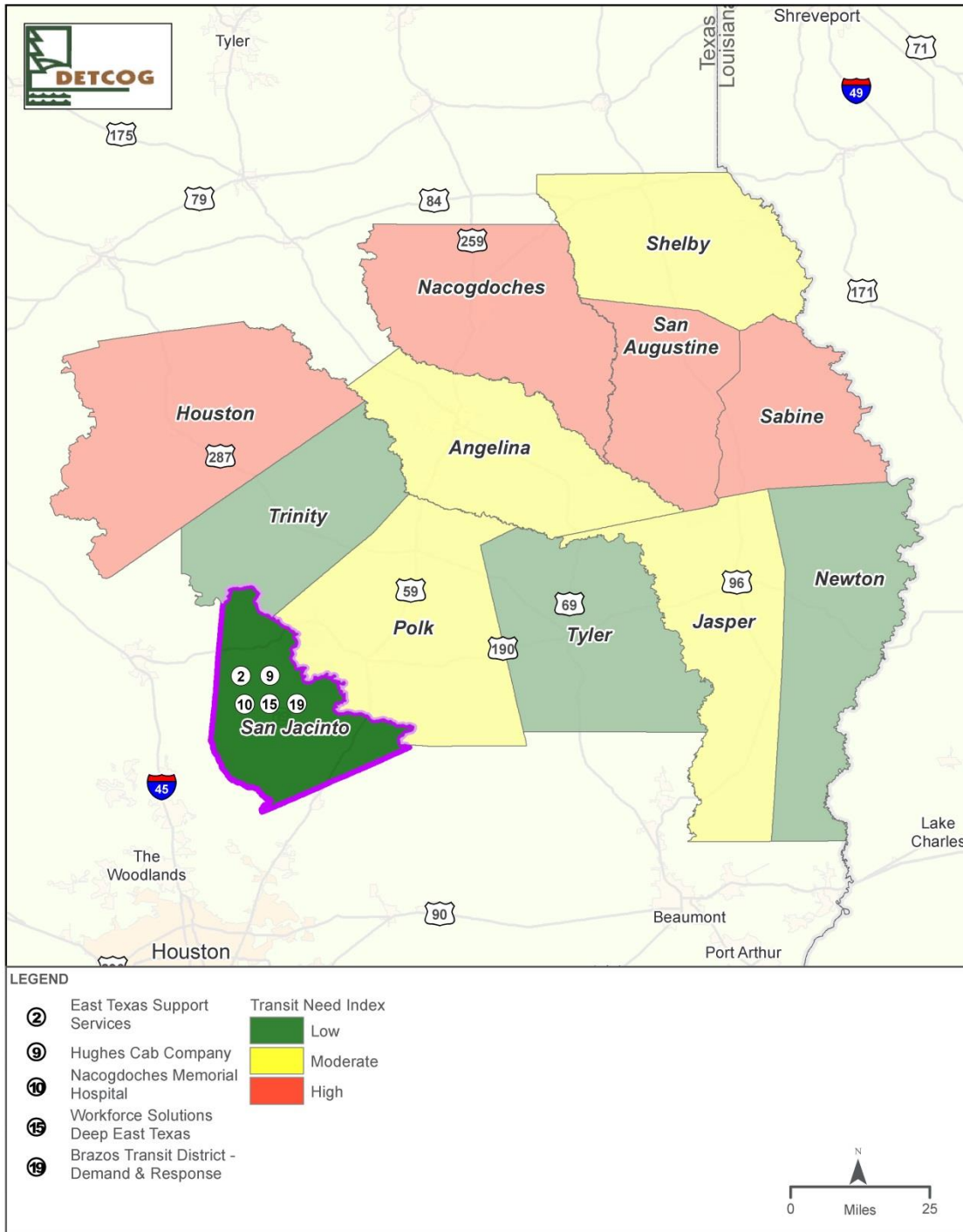


TRANSIT NEED - SAN AUGUSTINE COUNTY





Figure III-10 Transit Needs Index: San Jacinto County

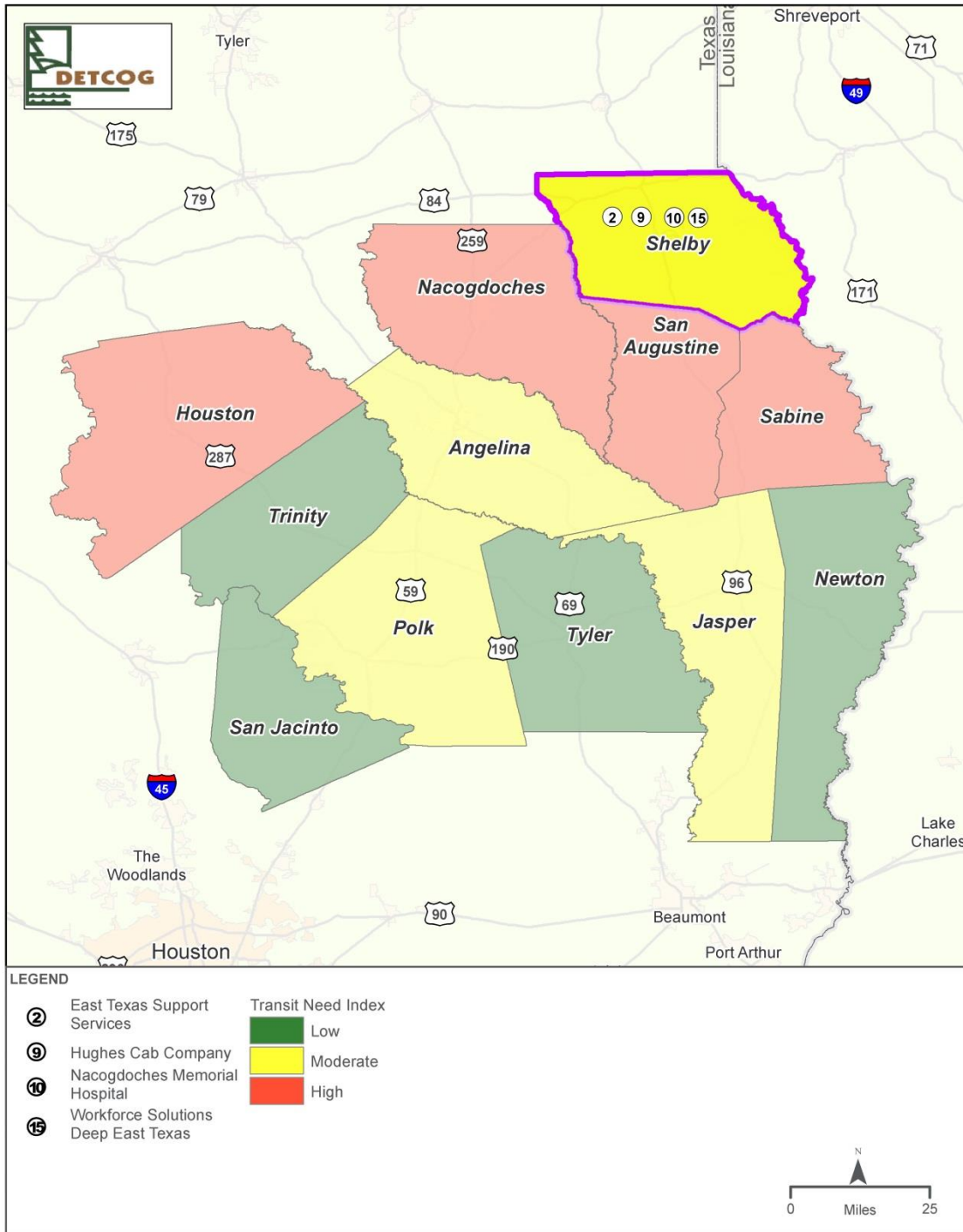


**TRANSIT NEED - SAN JACINTO COUNTY**





Figure III-11 Transit Needs Index: Shelby County



**TRANSIT NEED - SHELBY COUNTY**



Figure III-12 Transit Needs Index: Trinity County

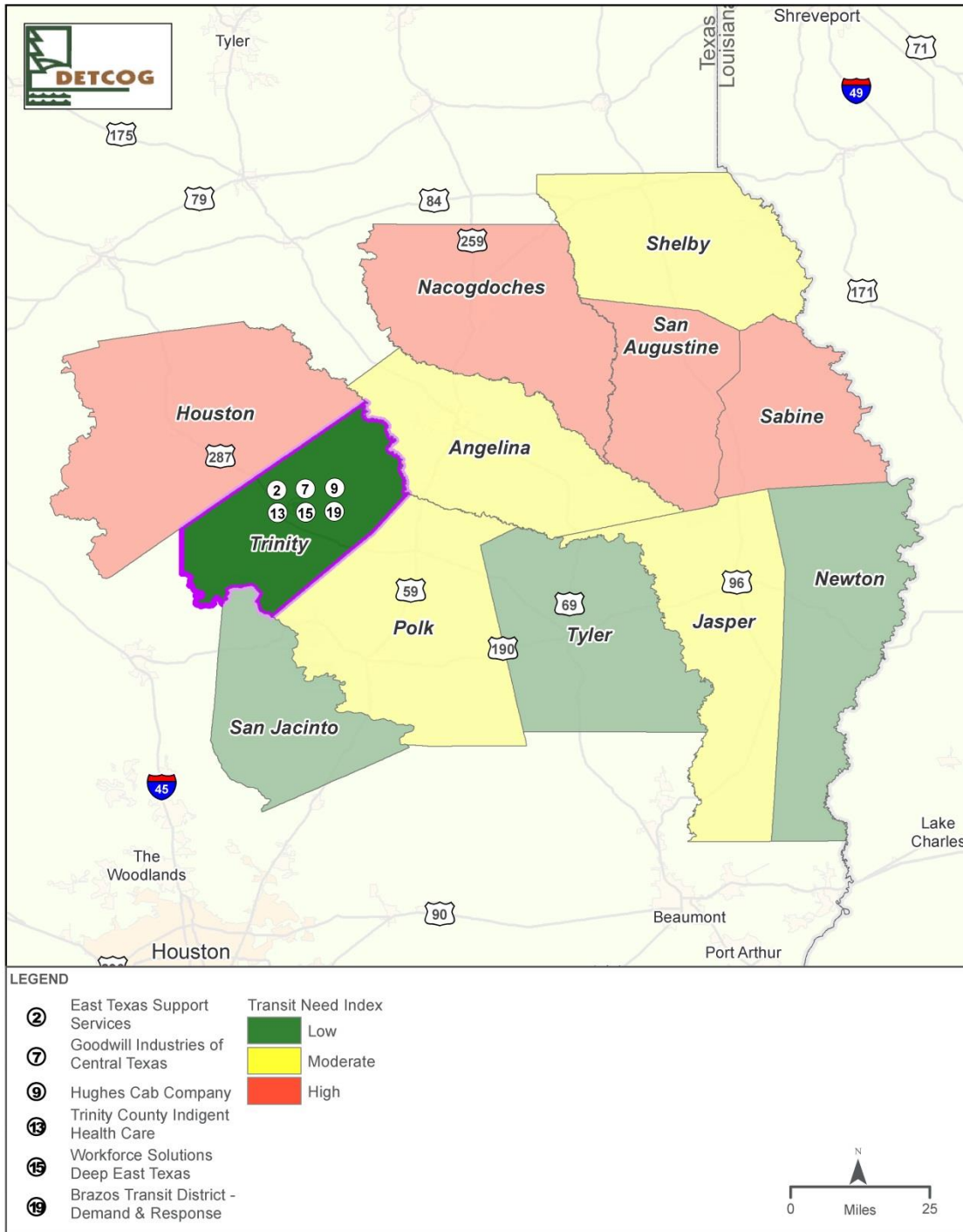
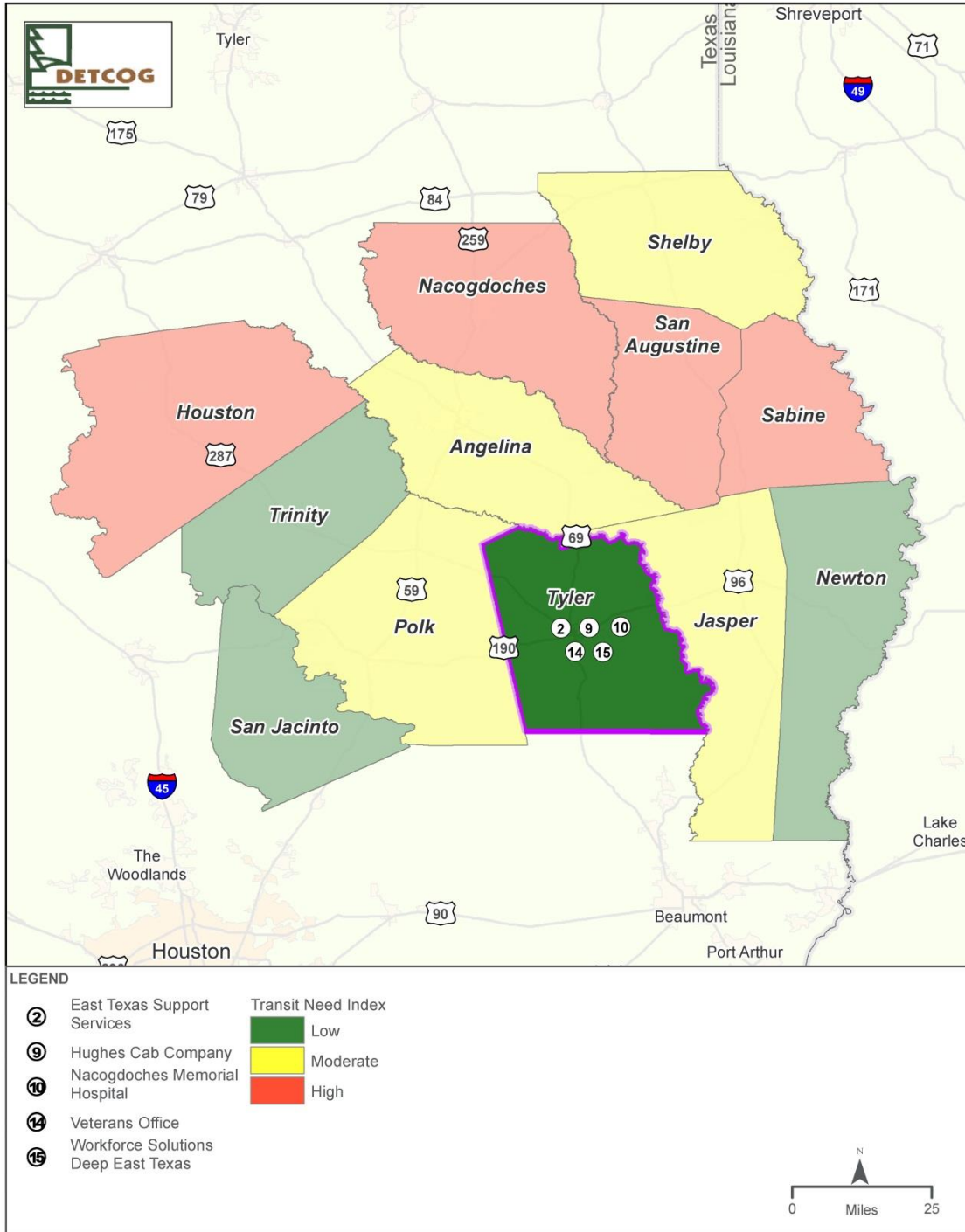


Figure III-13 Transit Needs Index: Tyler County



**TRANSIT NEED - TYLER COUNTY**





## Regionally Coordinated Transportation Plan 2017

---

Based on the analyzed data, there are transit options offered to your westernmost and heavily populated counties, such as Angelina, Nacogdoches, and Polk. Jasper County is currently heavily populated but does not have current transit services that are offered to the general public. As population continues to grow in the westernmost counties, transit service will become a crucial factor in maintaining current services and introducing new services to keep up with growth.

Additionally, Angelina and Nacogdoches counties have the majority of major employers within the 12-County region and needs could continue to be addressed with ensuring options for employees to have an alternative mode of transportation to and from work.

As indicated in 2011 study, the six easternmost counties (Jasper, Newton, Sabine, San Augustine, Shelby, and Tyler) experience gaps in service as they do not have and form of public transit service. They have some providers that provide service through health and humans service provider, however those services are limited to those that meet medical eligibility. There has been the expansion of addition transportation services through, non-profit organizations (employees only) and private cab or car service. Although limited, transportations options are growing and there is an opportunity to look at additional funding sources and/or organizations that may be willing to expand their service boundaries.

## IV. Planning for Comprehensive Services

---

DETCOG will continue to identify funding sources and encourage communications efforts as well as help agencies leverage resources within the county. As mentioned above, most services are provided to providers through 5310 funding, HHS, Texas Workforce Programs, or private transportation services. DETCOG through working with its stakeholders has been able to help determine needs and look for opportunities for resources to be pooled.

As DETCOG concentrates on goals for the community that are most achievable during the coordinated planning period, they will continue to champion awareness and notify providers when funding or other opportunities become available. For instance during this process, the stakeholders were continuously engaged and able to share their challenges for their community, they were also able to discuss possible solutions and how to address imminent future needs.

DETCOG is instrumental promoting awareness of Section 5310 funding opportunities, hosting calls for providers to be able to consider submission of projects for 5310 funding and supporting those agencies seeking funds. Those agencies applying for Section 5310 funds will collaborate with BTDC to apply for the grant and BTDC will provide grant oversight. Likewise, DETCOG has worked with the 2-1-1 Information Assistance Line to assist the community in locating non-profit transportation services.

DETCOG will continue to support public involvement efforts to ensure the region is aware of transit options and services, particularly those offered by BTDC in the westernmost six counties (Angelina, Houston, Nacogdoches, Polk, San Jacinto, and Trinity), they will continue to support efforts to develop multi-resourced community based transit services in San Augustine and Crockett, work with the Center for Independent Living – community organizers that advocate transportation services.





## V. Integrated Planning Processes

---

One of the goals of this Regionally Coordinated Transportation Plan Update 2017 is to integrate the planning process while developing this plan with the goals of the region. City and county plans were identified and reviewed for transportation elements. While most cities and counties in the DETCOG region did not have a long range plan or comprehensive plan a few plans were identified. The City of Lufkin comprehensive plan is in progress and no data was available at the time of this Study. The Cities of Ivanhoe and Zavalla also are working on plans that were not available at the time of this Study. The City of Center has a comprehensive plan, although there was not a transit component, there is a description of their thoroughfare plan and identified goals to include hike and bike trails along abandoned railroad rights-of-way. The workforce provides bus passes or gas cards to their clients that have transportation needs as indicated in their Operation Plan. Although not transit related specifically, information from the City of Center and the Texas Workforce may be useful in future collaboration efforts amongst the region's stakeholders.

The City of Nacogdoches has a much defined transit element in their comprehensive plan and it is outlined below.

### **The City of Nacogdoches has identified the following in their comprehensive plan for transit:**

- Enhancing Public Transportation Service – While a formal system of public transportation is relatively new to Nacogdoches (since 2000), concerns were expressed about the viability and usefulness of the current system without better visibility and accessibility. These are challenging issues for any small-city transit system, but users and potential users suggested that such improvements are needed if the community wants to avoid losing a service it worked so hard to gain. The City of Nacogdoches already contributes funds annually in support of local transit service and will likely need other public and private partners to assist in service enhancement efforts. A diversity of interests expressed the need to work together on this issue given the dependence of many elderly, disabled and low-income individuals on reliable public transit service. It was also pointed out that running the system from the restored railroad depot should be a great help in terms of marketing/visibility and basic operations (versus inactive buses sitting in parking lots).
- Enhancing Public Transportation Service Goal: A viable, well-used public transit system that meets definite needs while also providing a practical alternative for various automobile trips in town.

### **Providing for Non-Vehicular Circulation Goal:**

- Progress toward being recognized as a pedestrian- and bicycle-friendly community, and a community that shows particular concern for accessibility for all persons.

DETCOG would be able to work with the City of Nacogdoches in establishing the key elements of the transit portion of their comprehensive plan, assist with educational awareness and continue to encourage and engage in collaborative efforts.



## VI. Vision, Mission, Goals and Objectives

---

The 2016 vision for the Regionally Coordinated Transportation Plan Update is:

*“We are a 12-county Council of Governments that works, along with its Stakeholders, to improve the safety and well-being of DETCOG citizens and assist them in improving the quality of their lives.”*

The 2016 mission statement for the DETCOG Regionally Coordinated Transportation Plan Update is:

*“Deep East Texas Council of Governments and its Stakeholders provide support for collaborative approaches to mobility, improved quality of life and safe/efficient movement of people in the Deep East Texas region.”*

The following are short term goals and objectives for this plan were approved by Stakeholders and supported by DETCOG:

### Goal 1

Encourage the implementation of general public transportation circulator or express routes from low population counties to higher population counties.

#### Objectives

- Work with BTD on identifying funds to implement the shuttles
- Work with the cities and counties on marketing shuttle and creating demand

Example of this goal that is already close to implementation is a general public transportation shuttle once a week from Houston County (City of Crockett) to Angelina County (City of Lufkin). To keep this shuttle viable the following objectives should be considered:

- Work with the cities of Lufkin and Crockett on marketing the shuttle to help ridership
- Work with the medical centers, major employers and major retail destinations in Lufkin to market and encourage ridership of the shuttle
- Work with medical centers and major employers in Lufkin on possible subsidy for passengers who cannot afford the shuttle

### Goal 2

- Facilitating the inclusion of Transit Services Provider information into the DETCOG Region 2-1-1 HHS referral data base.

#### Objectives

- Work with 2-1-1 to ensure completion of system
- Work with health and human service providers to stress the importance of being a part of the 2-1-1 system
- Inform and educate residents of the region about the system to encourage use



# Regionally Coordinated Transportation Plan 2017

---

## Goal 3

Facilitate the installation, and use, of “bus stop” facilities at locations of likely use by the elderly and handicapped.

### Objectives

- Work with BTD on identifying bus stops along the fixed routes that are heavily used by elderly and disabled patrons. This could include those stops that are near or at assisted living facilities, medical centers or major retail centers
- Work with the Cities of Lufkin and Nacogdoches on installation of ADA ramps, sidewalks or other amenity to assist the elderly and disabled population
- Work with property owner of bus stop to look at potential funding for installation of amenities
- Work with agencies who would qualify to apply for Section 5310 Program funds to assist with the funding for this project
- Second phase should be to install ADA ramps and sidewalks at all fixed route bus stops

## Goal 4

Encourage the creation and distribution of information on existing transit services in the region.

### Objectives

- Work with those agencies providing transit service such as BTD and health and human service agencies to create marketing collateral to better market and educated the residents of the region
- Work with the Workforce Commission on helping educate those who utilize their services on encouraging their users to utilize transit
- Work with the colleges and universities in the region to inform and educate their students on transit in the area and help encourage students to use transit as a means to get to school
- Work with school districts on creating an educational campaign that can be discussed with middle and high school students to encourage the use of transit to school
- Work with medical centers and doctor’s offices on the transit available to their patients

BTB is the general public transportation provider for the five of the six counties that are currently without public transportation and both BTB and the counties are working on adding service to those areas. While Newton County does not have a designated provider BTB is interested in providing the service for the county. Newton County and BTB have begun conversations regarding future service. To help improve service in all counties BTB is willing to partner with sub-recipients to support them in grant oversight.

## Goal 5

Work with cities and counties who are adding or expanding their bicycle and pedestrian modes to enhance transit and as a possible source for funding.

An example of this goal is to partner with the City of Lufkin who is making great progress in enhancing bicycle and pedestrian modes within their city.

### Objectives

- Work with the cities to link bicycle and pedestrian projects to transit
- Enhance transit options through bicycle and pedestrian modes

## Goal 6

Educate citizens of DETCOG region on transit services available and provided in each area

### Objectives

- BTB information and link to BTB website should be on all city, county and DETCOG websites to encourage



# Regionally Coordinated Transportation Plan 2017

---

use of general public transportation

- BTD information and link to BTD website should be placed on all websites for jobs, medical and education such as Workforce Solutions, Angelina College, SFA University

## Goal 7

Encourage the establishment of contractual relationships between dial-a-ride, paratransit and medical transportation providers with state & federal funding sources, health care providers and non-profit organizations to provide transit services to the qualified elderly and disabled in the 12-county region.

## Objectives

- Facilitate the establishment of Direct Purchase Service Agreements between the Deep East Texas Area Agency on Aging and East Texas Support Services, Watts Transportation, Nac Cab, Hughes Cab Company, Genesis Taxi Cab, Dago Taxi and the Brazos Transit District
- Facilitate the establishment of Direct Purchase Service Agreements between the Deep East Texas Area Agency on Aging and Quality Care Home Health Agency in Lufkin & Beaumont
- Encourage the establishment of Direct Purchase Service Agreements between CHI Memorial Medical Center and Woodland Heights Medical Center in Lufkin and Genesis Taxi Cab, Hughes Cab Company and Brazos Transit District.

Many in the elderly/disabled population cannot make their way to locations to be picked up by fixed route transit services. Their lack of stamina also makes waiting up to four hours for demand-response transit to pick them up and return them home extremely difficult.

60% of the meals provided in the region through the Senior Nutritional Program are now home delivered (Meals-On-Wheels). A significant number of the home delivered meals are not based on the recipient's inability to prepare their own meals, but are because of a lack of transportation for the individuals to purchase food for themselves.

The Deep East Texas Area Agency on Aging can purchase transportation services on a client by client basis throughout the 12-County region. These services can be for the purposes of medical care and shopping that includes food.



## VII. Sustain Planning & Implement Plan

---

The DETCOG region has an aging and declining population. Most of the region is below poverty and is located in very rural areas making transit very difficult and lends to a transit deprived population. DETCOG is not a service agency for transit but continues to work with its Stakeholders and support and facilitate opportunities for other lead agencies, i.e. BTD, counties, cities, HHS, etc. DETCOG and its Stakeholders plan to support all projects or plans that BTD as the general public transportation provider or other providers such as East Texas Support Services and Watts Transportation (Medicaid providers) develop to enhance or better public transportation within the region. DETCOG would continue to facilitate educational awareness, identify funding opportunities and assist Stakeholders with collaborative efforts to ensure achievement of the Plan's goals and objectives. Due to this, importance should be placed on using and leveraging existing resources.





## VIII. Performance Measures to Evaluate Effectiveness

---

The Regional Coordinated Plan should be reviewed and updated regularly to ensure that as the region changes the plan adapts to the change. The goals and objectives set for by this plan need to be reviewed by stakeholders to ensure that needs are being met, gaps are being filled and collaboration is taking place. As new services come online those efforts must be reviewed to ensure that efforts are not overlapping and if they do stakeholders must work together to streamline efforts.

These metrics can be updated by updating the tables in this document yearly to reflect the current status of the region. Stakeholders should meet twice a year to ensure that collaboration is taking place and ideas are being shared with others who may be able to offer assistance. During the stakeholder meetings new goals and objectives should be discussed along with action steps to help meet the goal. As the goals are put forward it should be identified who would champion the goal, what group(s) will be positively affected by the goal, along with possible funding sources to help achieve the goal. All meetings with stakeholders should be well documented to ensure collaboration and accountability is taking place.

The goals that were set forth by this Regional Coordinated Plan should be listed along with each objective. As the goals and objectives are met it should be documented how they were met and who the stakeholders involved were. Should a goal or objective not be met it should be documented as to why it was not met and those stakeholders involved.